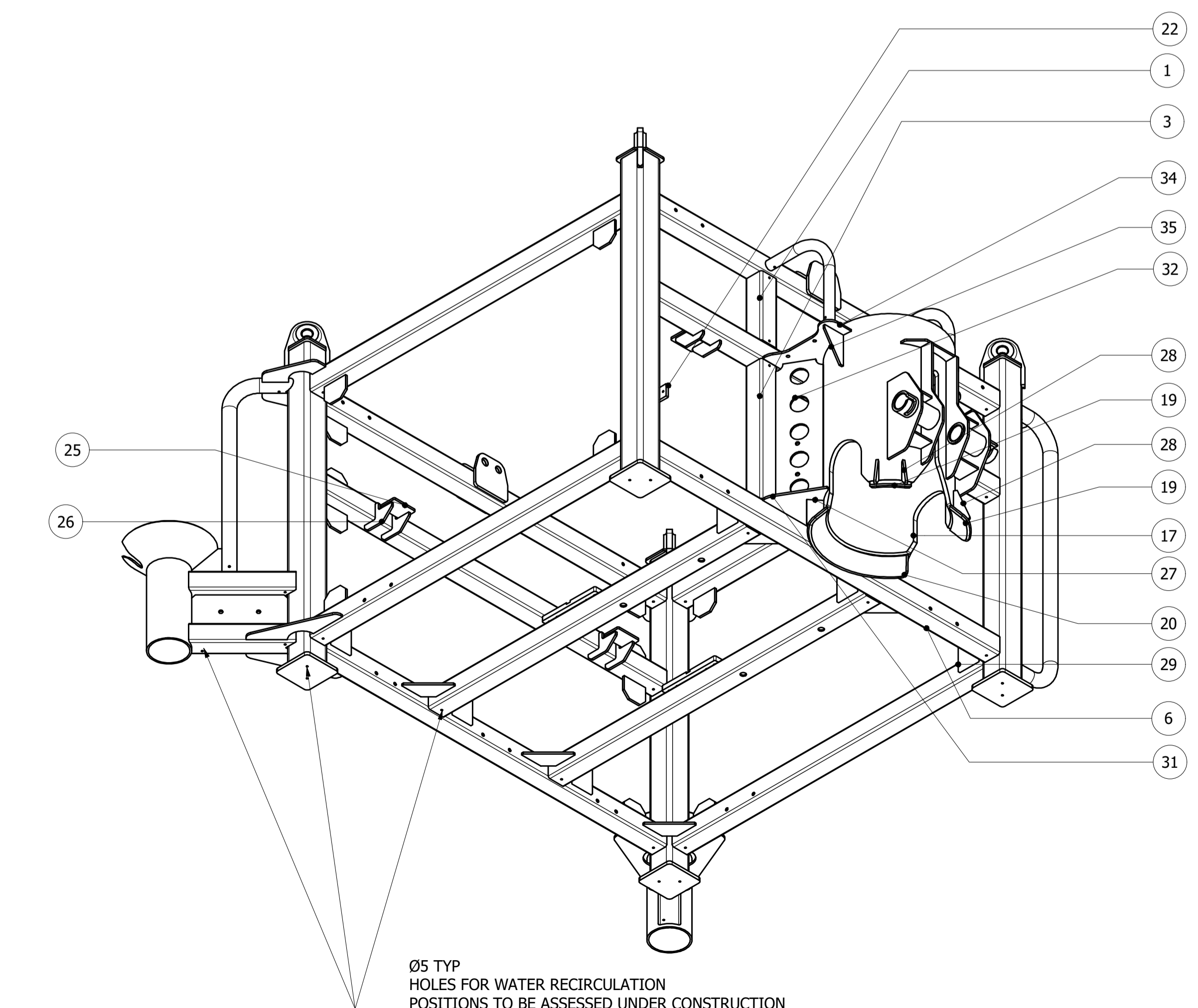
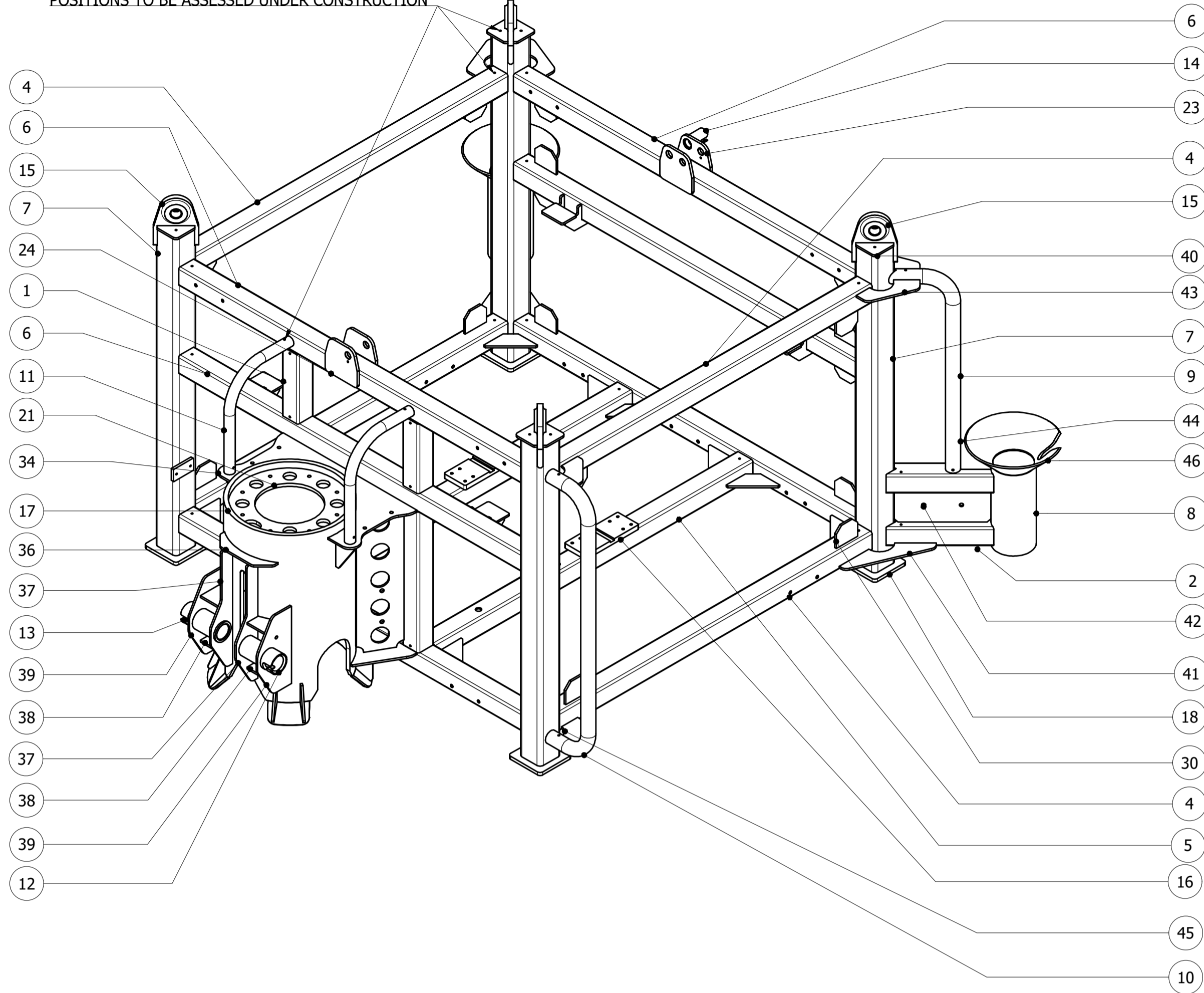
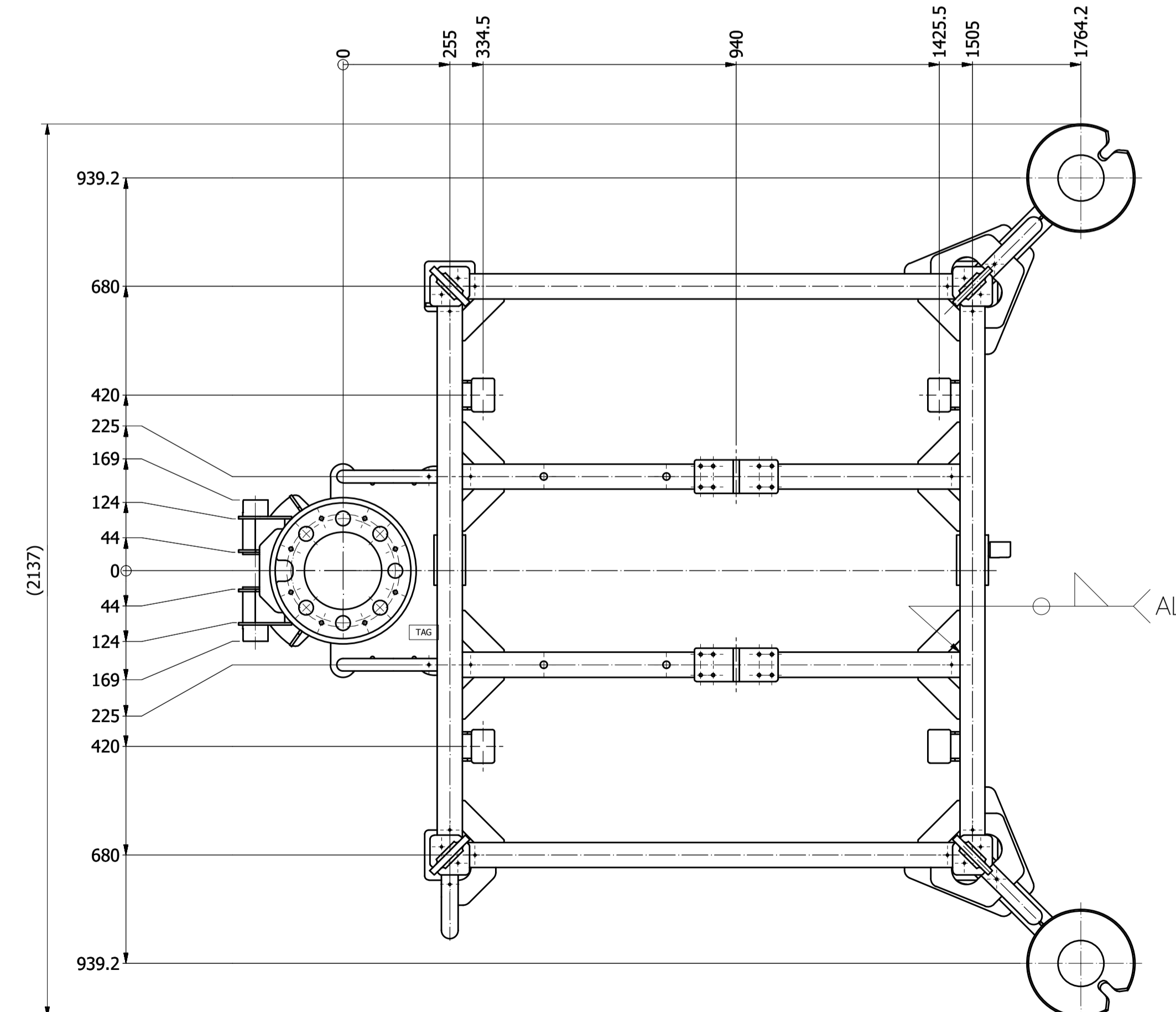
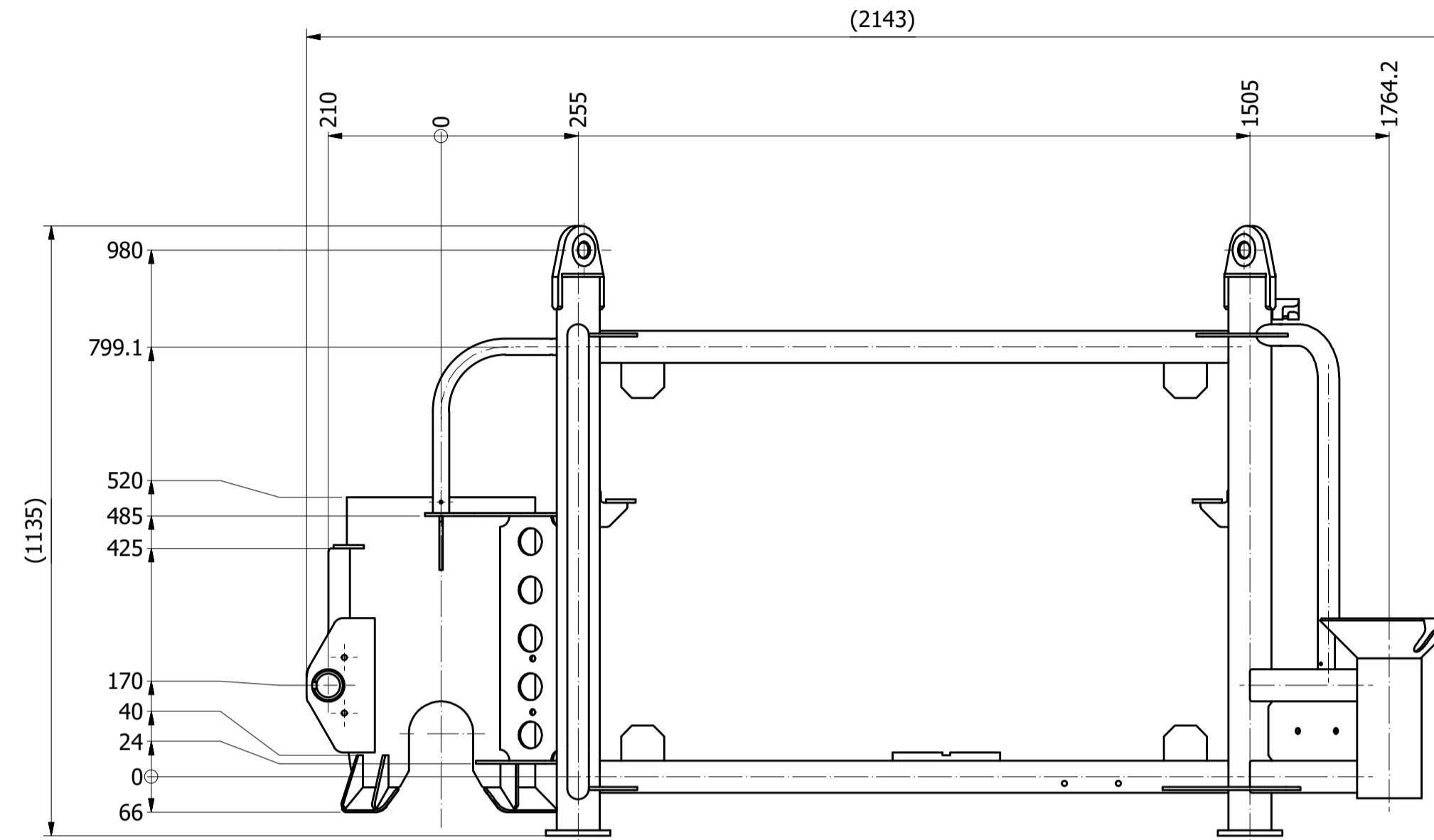


Ø5 TYP
HOLES FOR WATER RECIRCULATION
POSITIONS TO BE ASSESSED UNDER CONSTRUCTION



Ø5 TYP
HOLES FOR WATER RECIRCULATION
POSITIONS TO BE ASSESSED UNDER CONSTRUCTION



TOLERANCE ISO 2768-1 m (linear dimensions)		Item Description	FRAME
from 0 to 0.25	± 0.2	Standard	
from 0.25 to 0.5	± 0.3	Dimensions [mm]	1135x2137x2143
from 0.5 to 1	± 0.4	Material	SEE BOM
from 1 to 2	± 0.5	Material Certification / Data Sheet	SEE BOM
from 2 to 5	± 0.6	Material Specification	133952-SA-3R00-DB-00001
from 5 to 10	± 0.7	Treatment / Treatment Spec.	
from 10 to 20	± 0.8	Surface Coating / Surface Coating Spec.	
from 20 to 50	± 0.9	Welding Spec.	133952-SA-3R00-DS-00001
from 50 to 100	± 1.0	Weight In Air	112,8 kg
from 100 to 200	± 1.2	Weight In Water	70,1 kg

BOM CARPENTRY							
ITEM	QTY	DESCRIPTION	STANDARD	DIMENSIONS	MATERIAL	MAT. SPEC.	WEIGHT
1	2	SQUARE PIPE	ISO 12633-2	60x60x4-225	Aluminium 6082-T6	DS-06A	0.5
2	4	SQUARE PIPE	ISO 12633-2	60x60x4-290	Aluminium 6082-T6	DS-06A	0.6
3	2	SQUARE PIPE	ISO 12633-2	60x60x4-455	Aluminium 6082-T6	DS-06A	1.1
4	4	SQUARE PIPE	ISO 12633-2	60x60x4-1170	Aluminium 6082-T6	DS-06A	2.8
5	2	SQUARE PIPE	ISO 12633-2	60x60x4-1190	Aluminium 6082-T6	DS-06A	2.8
6	6	SQUARE PIPE	ISO 12633-2	60x60x4-1280	Aluminium 6082-T6	DS-06A	3
7	4	SQUARE PIPE	ISO 12633-2	80x80x8-1030	Aluminium 6082-T6	DS-06A	6.1
8	2	PIPE		Ø120x5	Aluminium 6082-T6	DS-06B	1.3
9	2	PIPE		Ø40x5	Aluminium 6082-T6	DS-06B	1.1
10	1	PIPE		Ø40x5	Aluminium 6082-T6	DS-06B	1.6
11	2	PIPE		Ø30x5	Aluminium 6082-T6	DS-06B	0.5
12	1	ROD		Ø60x130	Aluminium 6082-T6	DS-06B	0.4
13	1	ROD		Ø60x130	Aluminium 6082-T6	DS-06B	0.4
14	1	ROD		Ø38x45	Aluminium 6082-T6	DS-06B	0.1
15	4	PLATE		THK31	Aluminium 6082-T6	DS-06A	0.7
16	2	PLATE		THK15	Aluminium 6082-T6	DS-06B	0.6
17	1	PLATE		THK12,5	Aluminium 6082-T6	DS-06B	17.7
18	4	PLATE		THK10	Aluminium 6082-T6	DS-06B	0.4
19	2	PLATE		THK10	Aluminium 6082-T6	DS-06B	0.2
20	1	PLATE		THK10	Aluminium 6082-T6	DS-06B	0.6
21	1	PLATE		THK10	Aluminium 6082-T6	DS-06B	1.3
22	1	PLATE		THK8	Aluminium 6082-T6	DS-06B	0.1
23	2	PLATE		THK8	Aluminium 6082-T6	DS-06B	0.3
24	2	PLATE		THK8	Aluminium 6082-T6	DS-06B	0.3
25	4	PLATE		THK6	Aluminium 6082-T6	DS-06B	0.1
26	8	PLATE		THK6	Aluminium 6082-T6	DS-06B	0.1
27	3	PLATE		THK6	Aluminium 6082-T6	DS-06B	0
28	4	PLATE		THK6	Aluminium 6082-T6	DS-06B	0
29	12	PLATE		THK6	Aluminium 6082-T6	DS-06B	0.1
30	16	PLATE		THK 6	Aluminium 6082-T6	DS-06B	0.1
31	1	PLATE		THK6	Aluminium 6082-T6	DS-06B	0.7
32	2	PLATE		THK6	Aluminium 6082-T6	DS-06B	0.8
33	1	PLATE		THK6	Aluminium 6082-T6	DS-06B	0.4
34	1	PLATE		THK6	Aluminium 6082-T6	DS-06B	1
35	2	PLATE		THK6	Aluminium 6082-T6	DS-06B	0.1
36	1	PLATE		THK6	Aluminium 6082-T6	DS-06B	0.1
37	2	PLATE		THK6	Aluminium 6082-T6	DS-06B	0.3
38	4	PLATE		THK6	Aluminium 6082-T6	DS-06B	0.1
39	2	PLATE		THK6	Aluminium 6082-T6	DS-06B	0.4
40	8	PLATE		THK6	Aluminium 6082-T6	DS-06B	0.1
41	4	PLATE		THK6	Aluminium 6082-T6	DS-06B	0.2
42	2	PLATE		THK6	Aluminium 6082-T6	DS-06B	0.4
43	4	PLATE		THK6	Aluminium 6082-T6	DS-06B	0.1
44	2	PLATE		THK6	Aluminium 6082-T6	DS-06B	0.1
45	2	PLATE		THK6	Aluminium 6082-T6	DS-06B	0.1
46	2	PLATE		THK5	Aluminium 6082-T6	DS-06B	0.7

- NOTES:
- (*) All dimensions are in millimeters (mm)
 - (*) Unmachined surfaces shall be clean and natural
 - (*) Remove all burrs and sharp edge
 - (*) General tolerances must be in accordance with ISO 13920 - BF
 - (*) All fillet welds shall be continuous full penetration
 - (*) All fillet welds shall be continuous, and the size "S" shall be equals 0.7 times of the minimum thickness to be welded
- (*) Unless Otherwise Stated

NOTES TAG:
TAG to be performed as per ref. doc. 133952-SA-3R00-RP-00003.
In case of anodized/painted part coating shall not be removed

A03 x 1

Rev.	Date	Issue Description	Prepared by	Engineering Check	Technical Approval	Management Approval
A03	14/09/2021	ISSUE FOR CONSTRUCTION	DECA	SA/RT	AS	BG
A02	09/07/2021	ISSUE FOR CONSTRUCTION	DECA	SA/RT	AS	BG
A01	11/06/2021	ISSUE FOR BID	DECA	SA/RT	AS	BG

Project Name: HYDRONE

Document Title: FRAME

Scale: 1:10

Size: A1

Drawing No.:

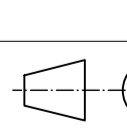
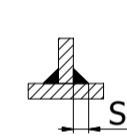
133952-SA-3R07-MD-00469

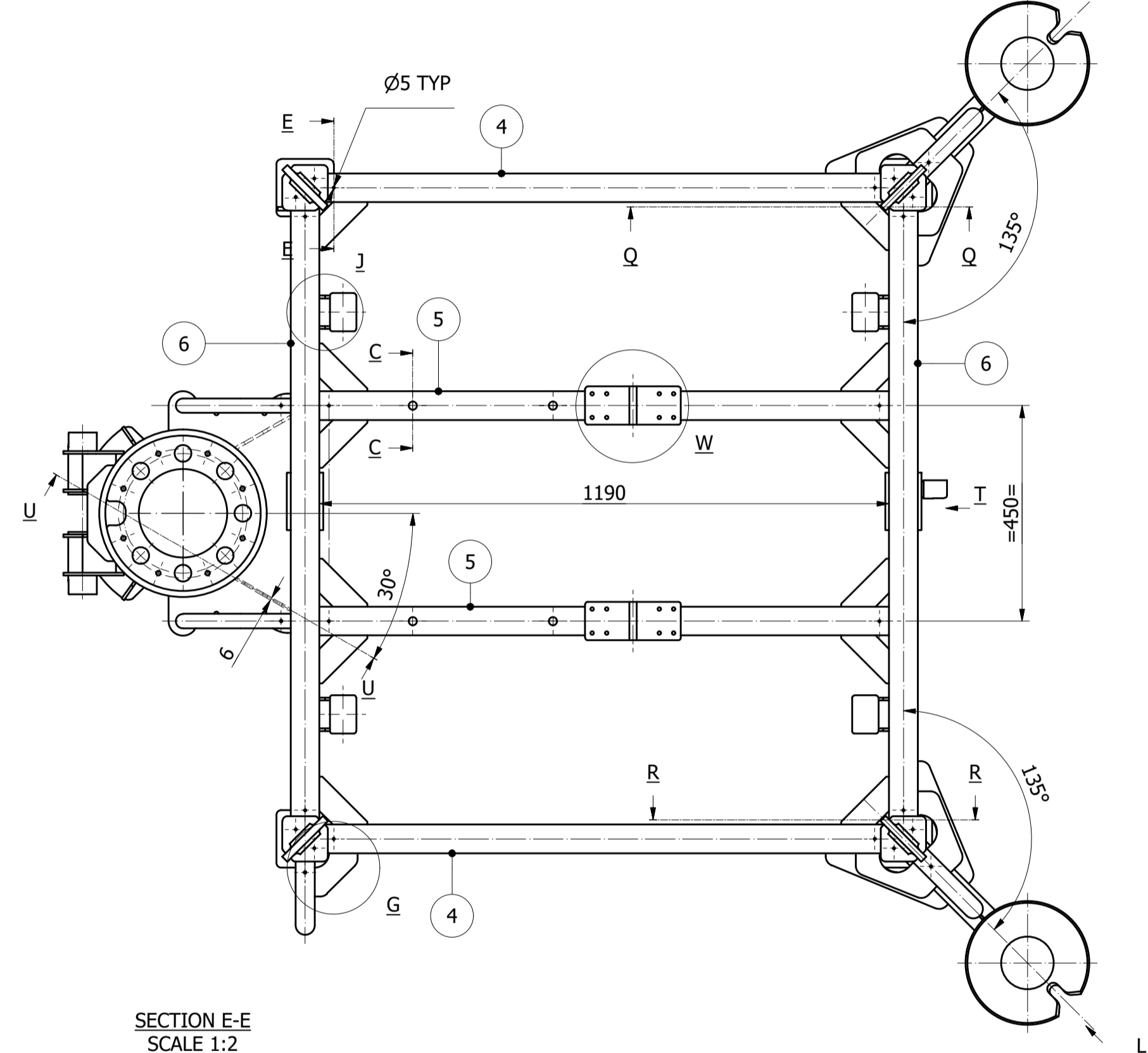
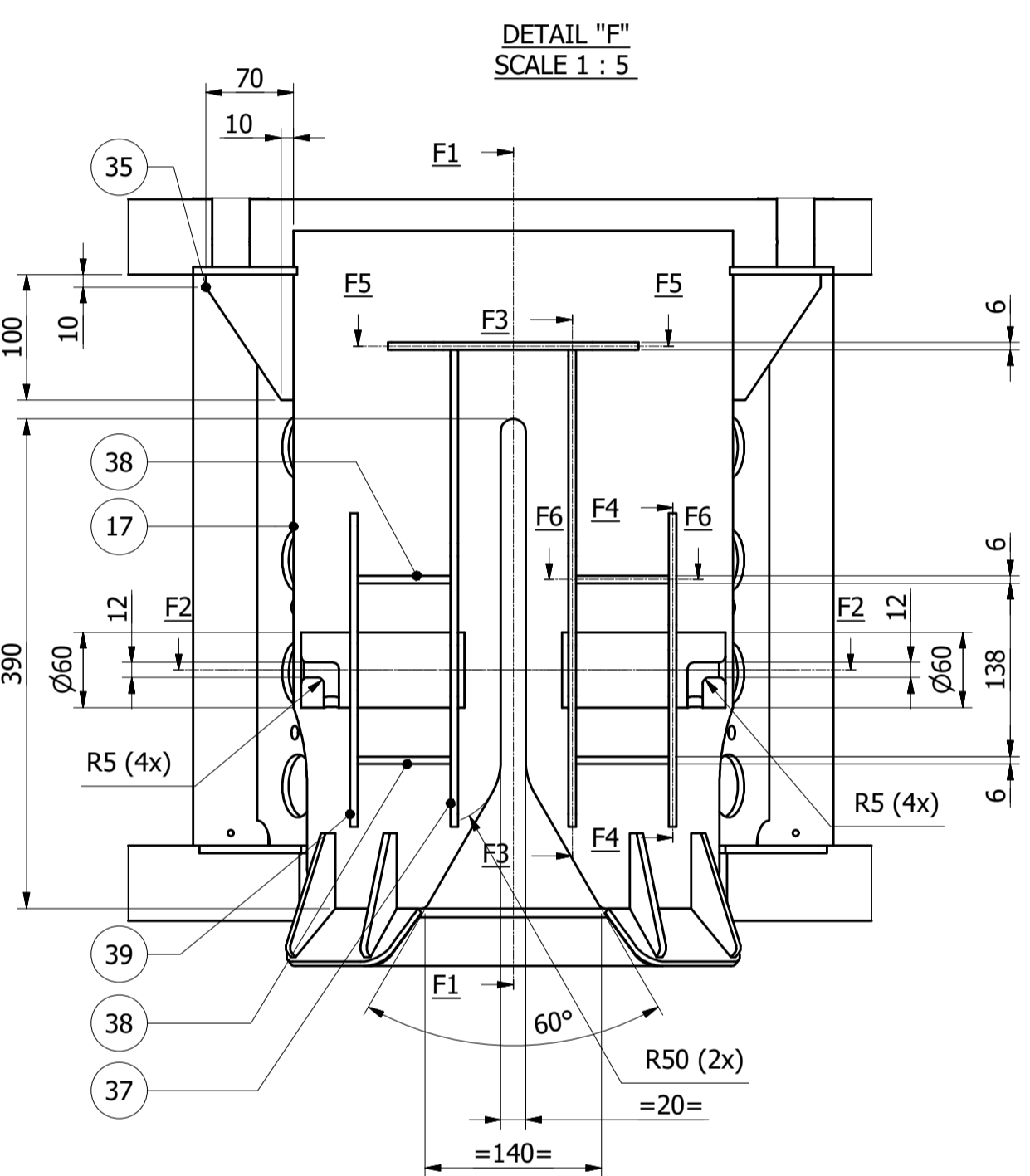
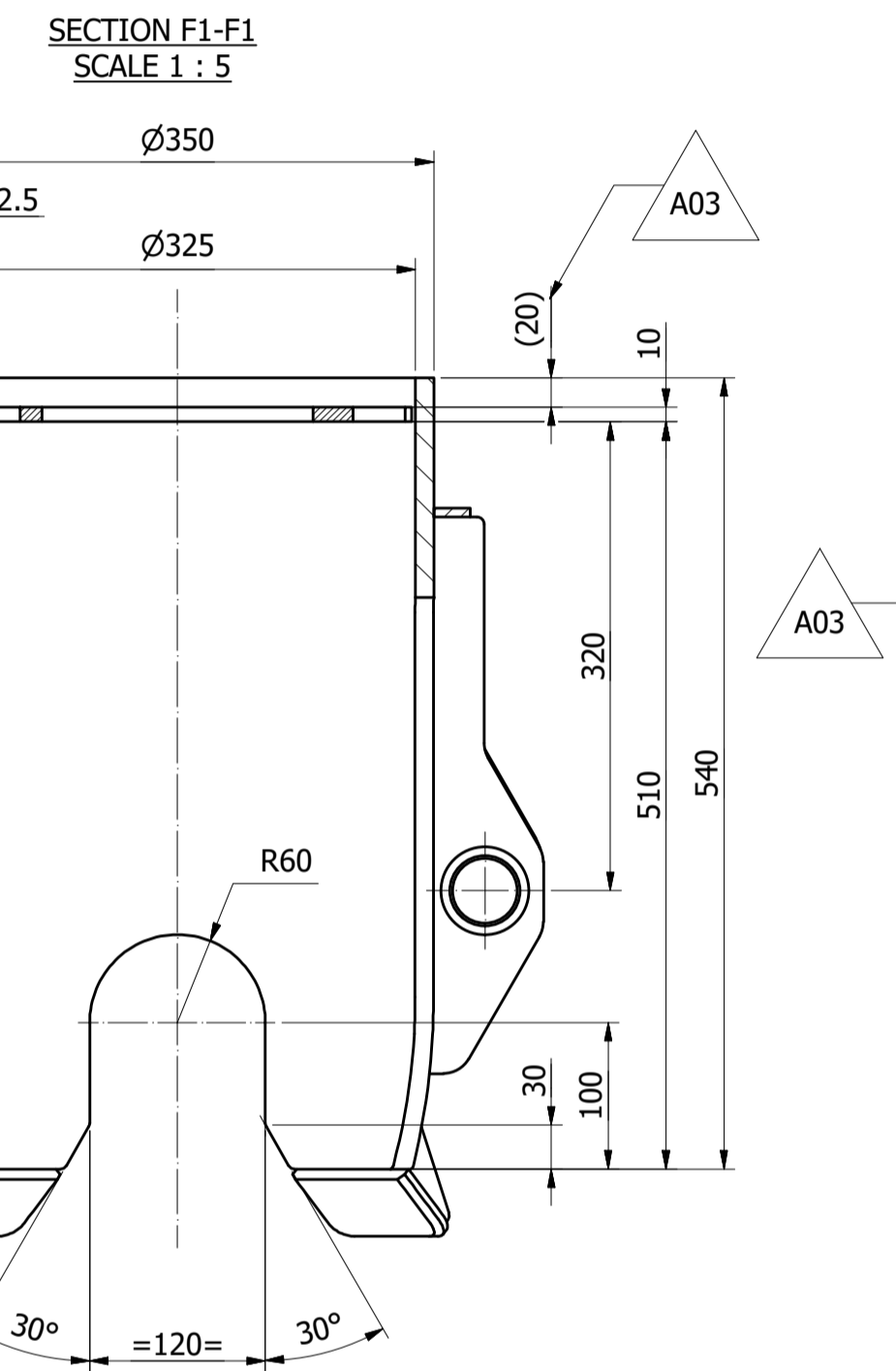
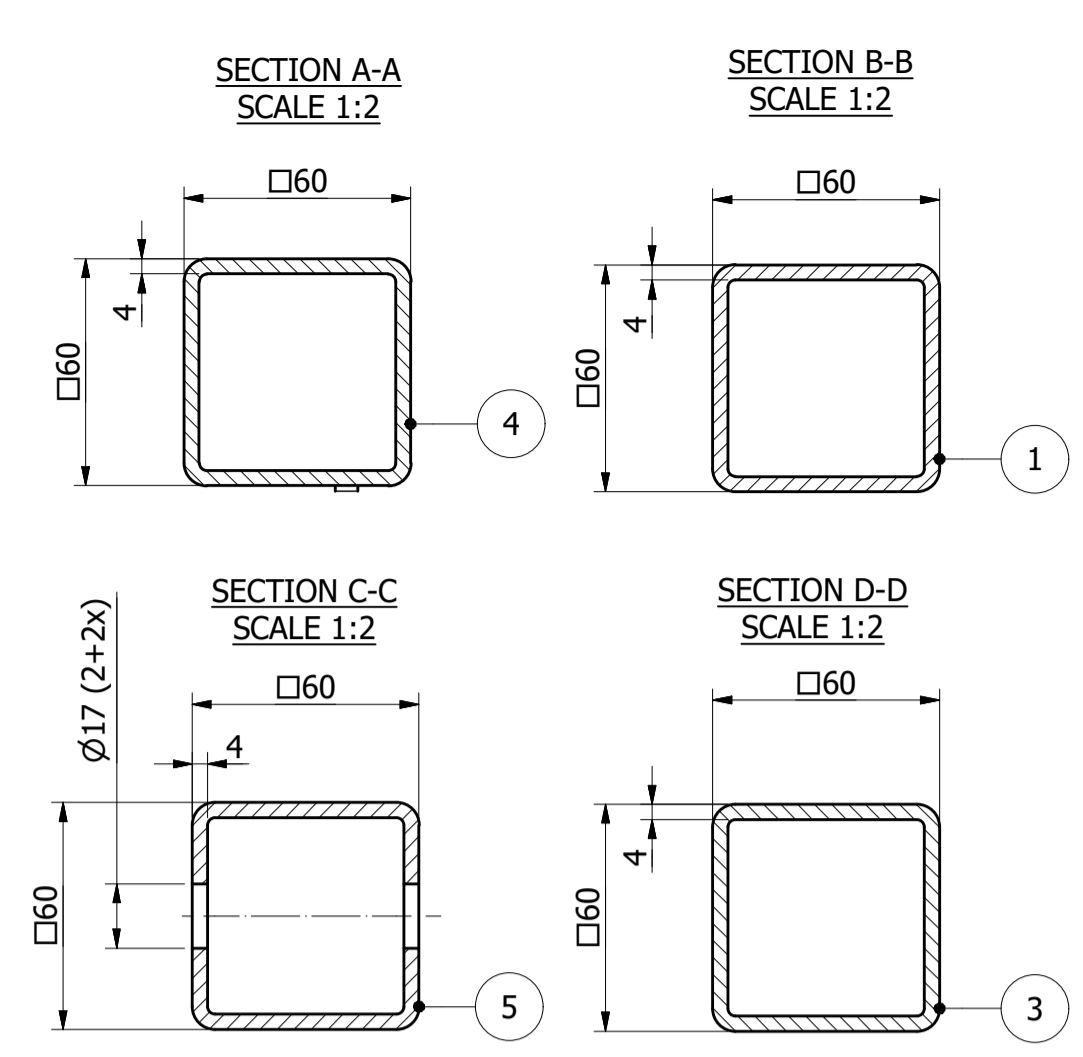
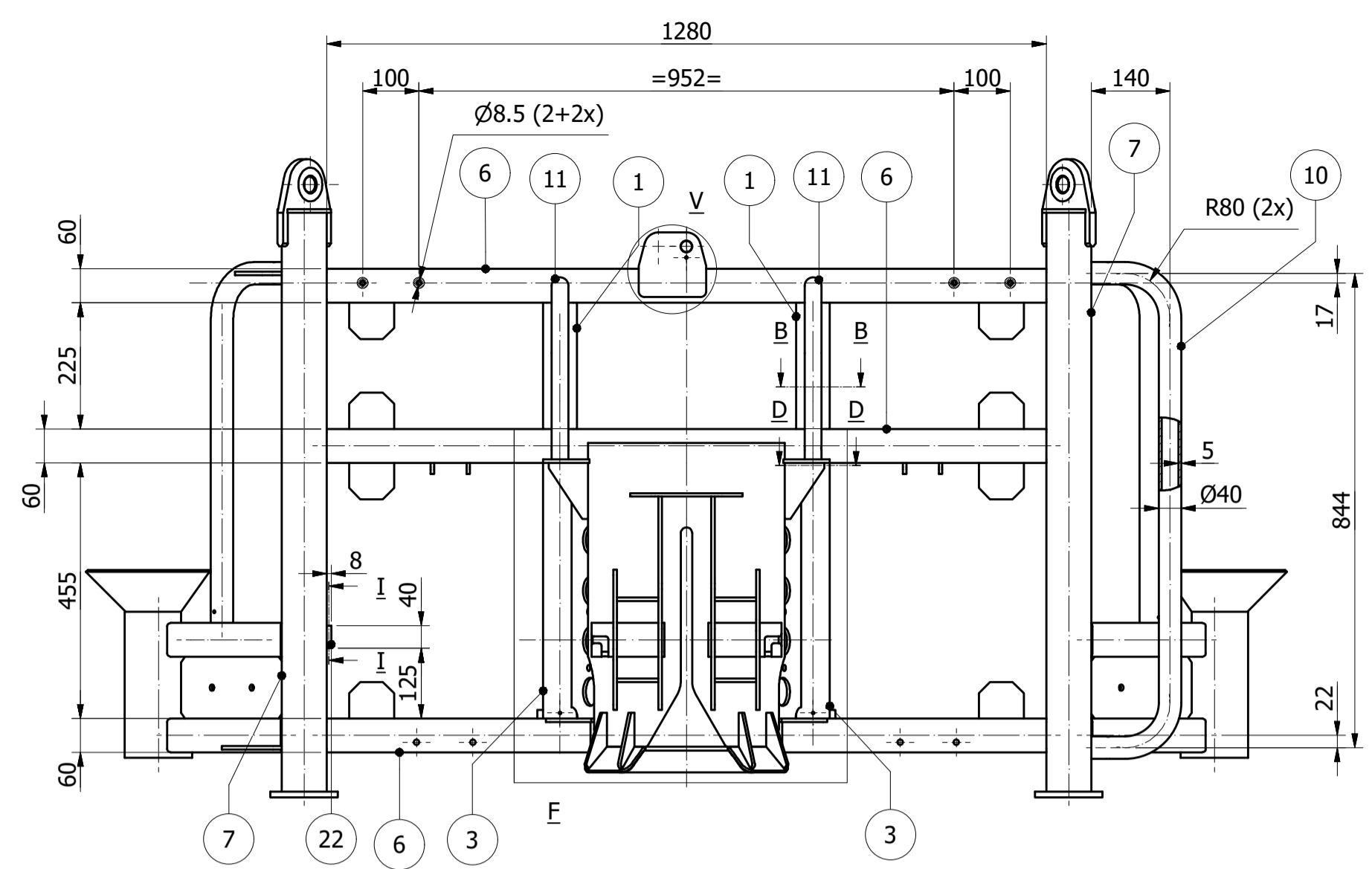
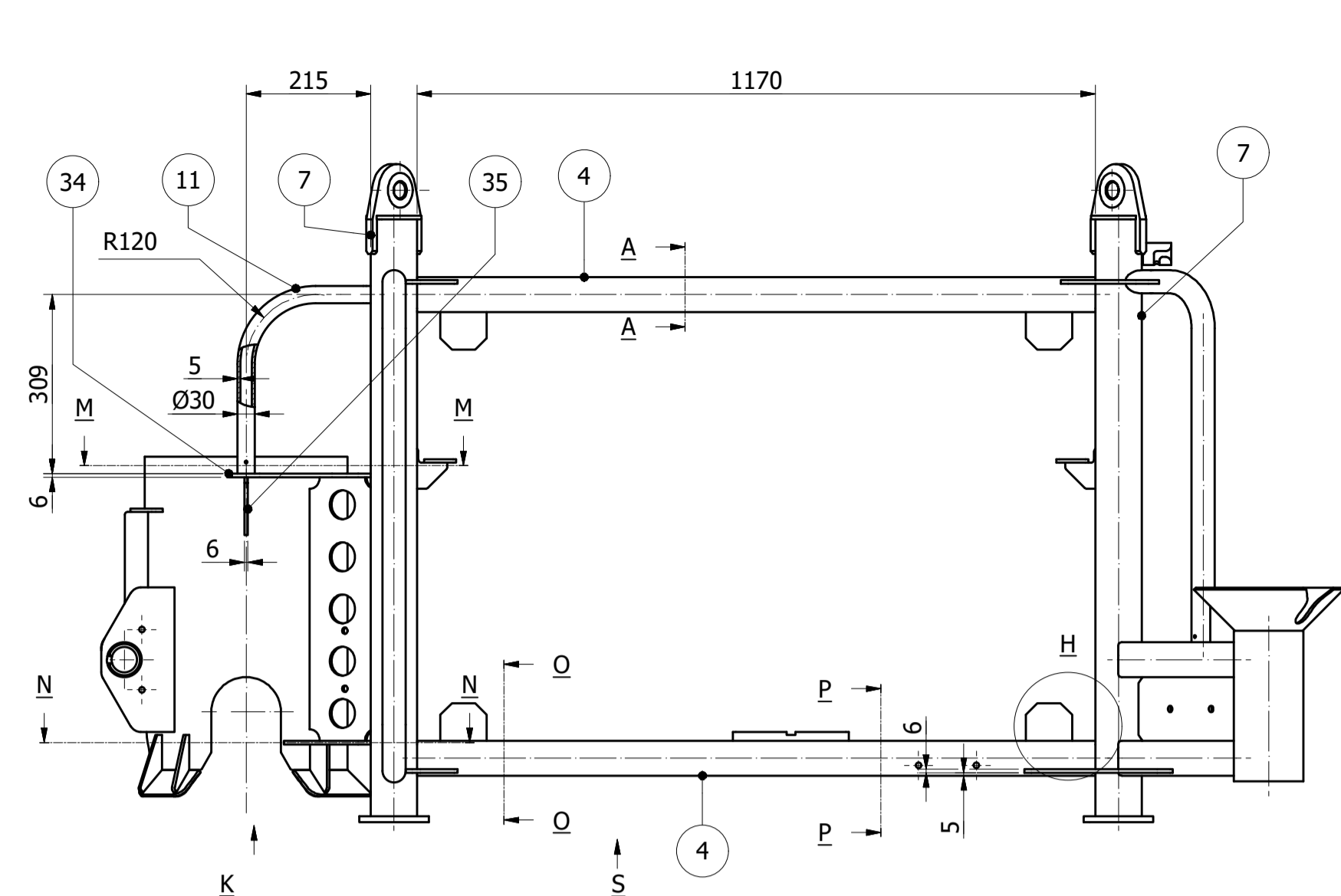
Sheet 1 of 4

WBS: NNY1

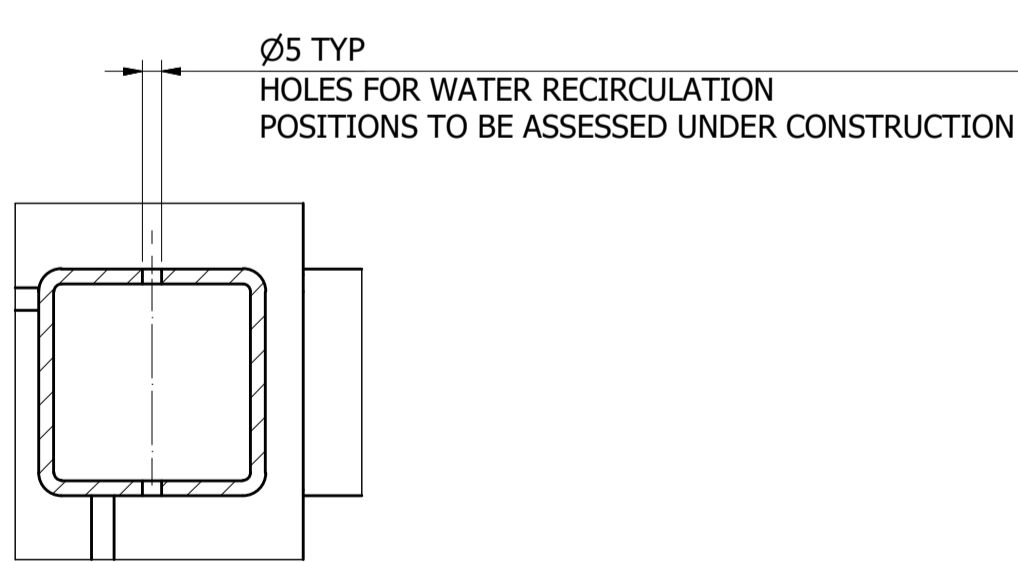
E-Code: 0711

File Name: 133952-SA-3R07-MD-00469-A03.idw

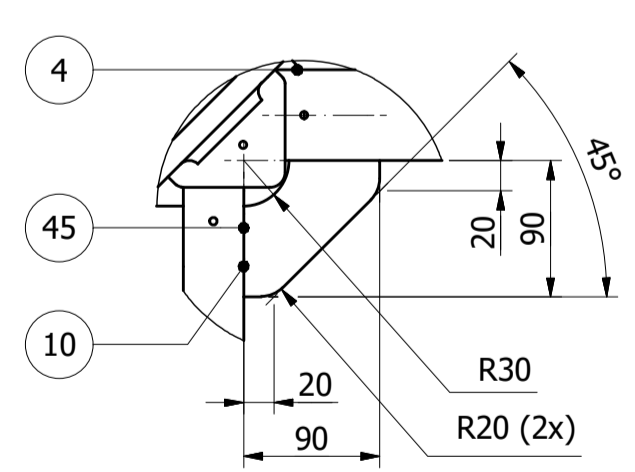




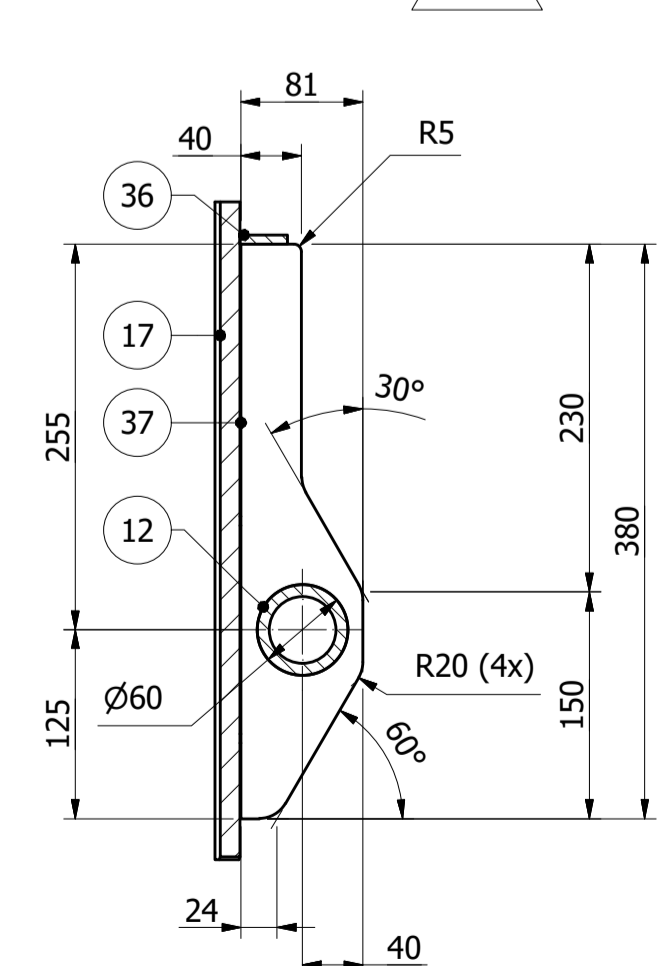
SECTION E-E SCALE 1:2



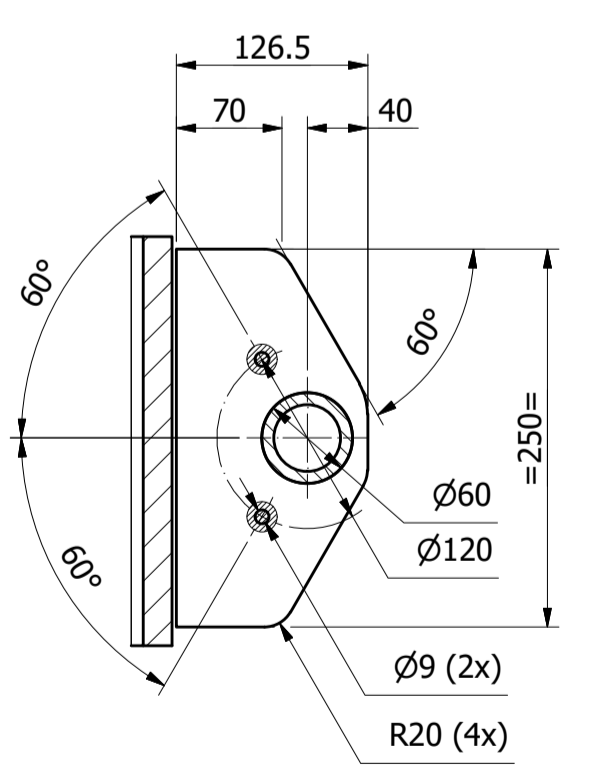
DETAIL 'G' SCALE 1:5



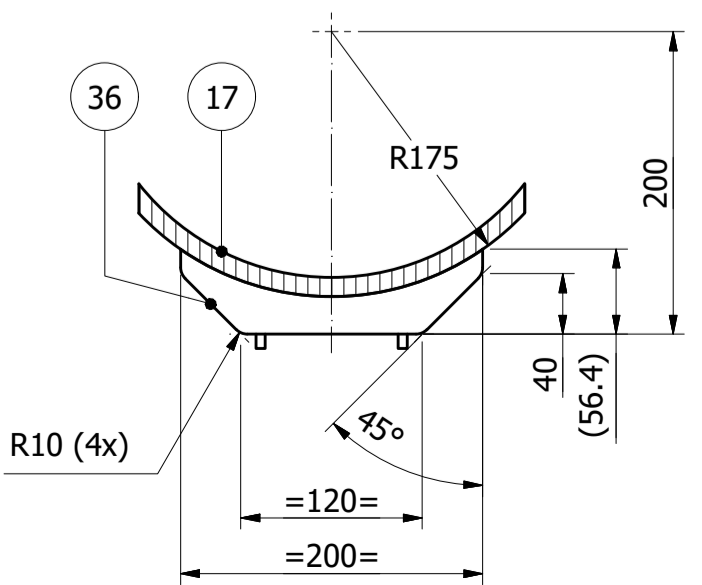
SECTION F3-F3 SCALE 1:5



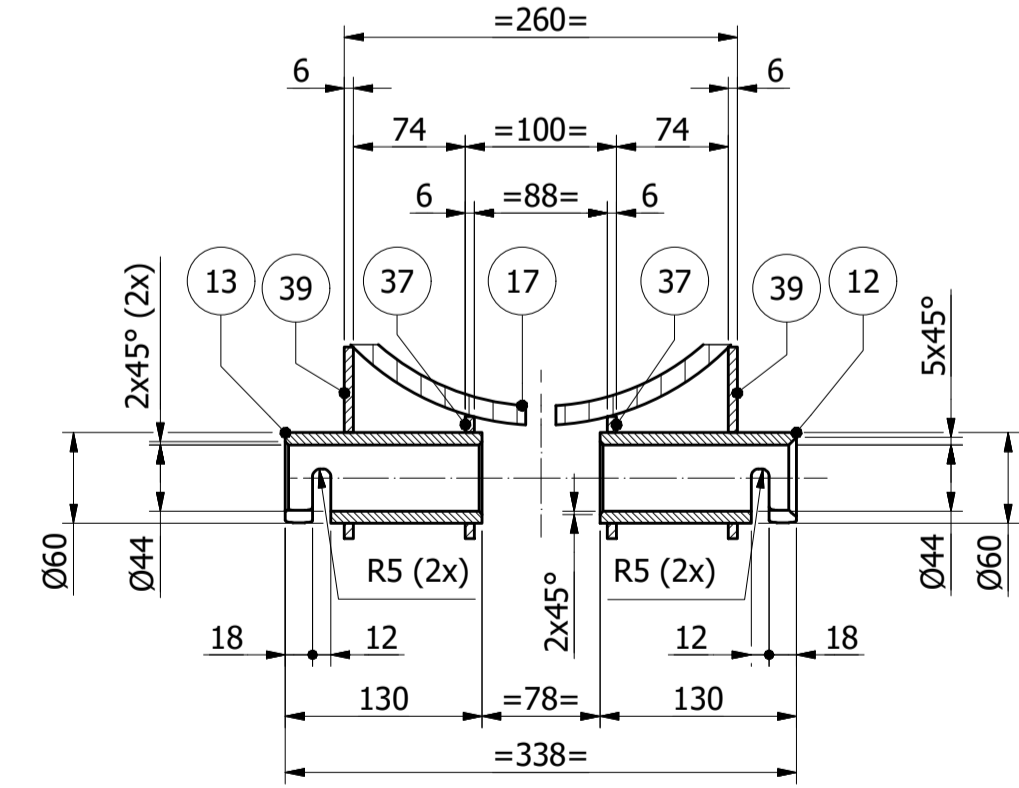
SECTION F4-F4 SCALE 1:5



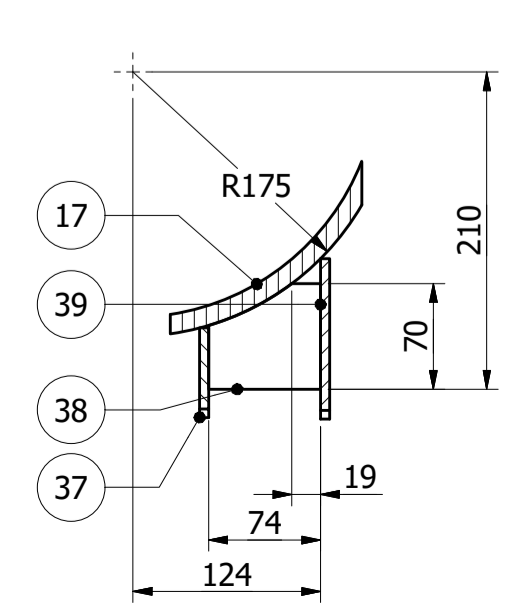
SECTION F5-F5 SCALE 1:5



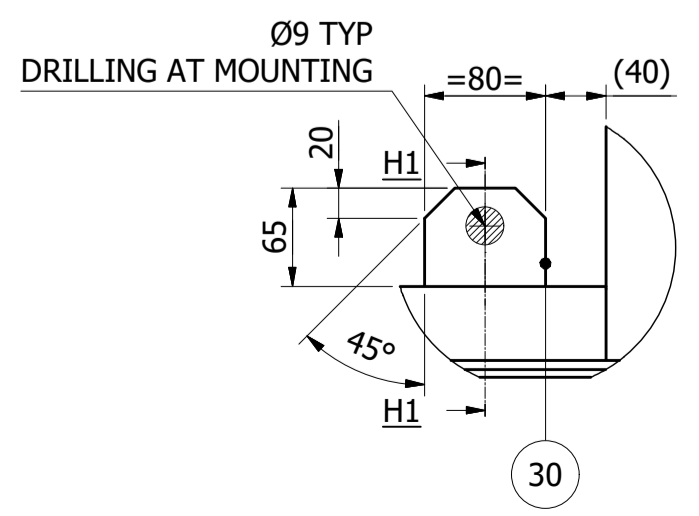
SECTION F2-F2 SCALE 1:5



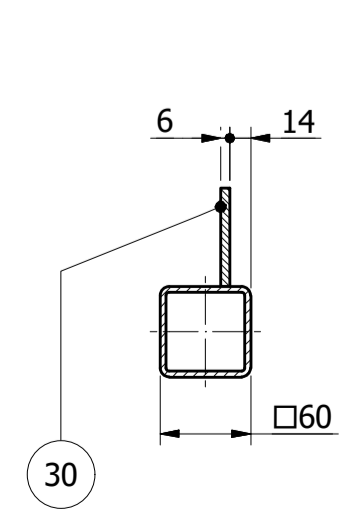
SECTION F6-F6 SCALE 1:5



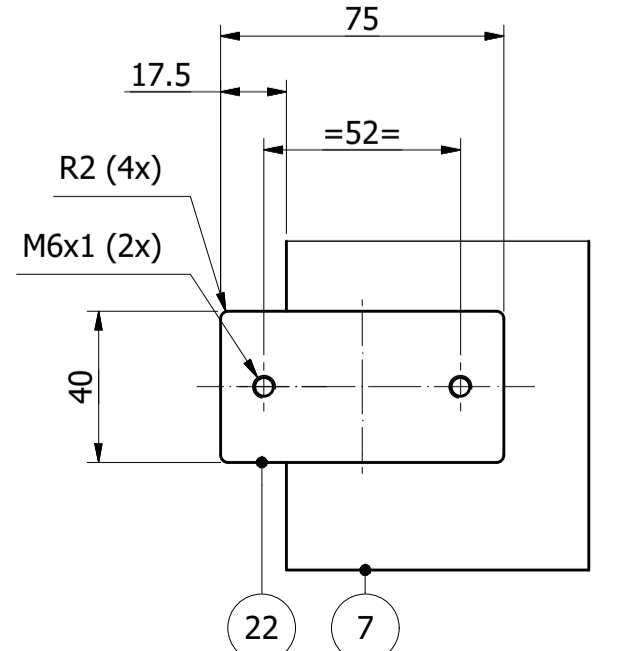
DETAIL 'H' SCALE 1:5



SECTION H1-H1 SCALE 1:5



SECTION I-I SCALE 1:2



Item Description		FRAME	
from 1000	to 2000	Standard	
from 1000	to 2000	Dimensions [mm]	1135x2137x2143
from 1000	to 2000	Material	SEE BOM
from 1000	to 2000	Material Certification / Data Sheet	SEE BOM
from 1000	to 2000	Material Specification	133952-SA-3R00-DB-00001
from 1000	to 2000	Treatment / Treatment Spec.	
from 1000	to 2000	Surface Coating / Surface Coating Spec.	
from 1000	to 2000	Welding Spec.	133952-SA-3R00-DS-00001
from 1000	to 2000	Weight In Air	112,8 kg
from 1000	to 2000	Weight In Water	70,1 kg

BOM CARPENTRY							
ITEM	QTY	DESCRIPTION	STANDARD	DIMENSIONS	MATERIAL	MAT. SPEC.	WEIGHT
1	2	SQUARE PIPE	ISO 12633-2	60x60x4-225	Aluminium 6082-T6	DS-06A	0.5
2	4	SQUARE PIPE	ISO 12633-2	60x60x4-290	Aluminium 6082-T6	DS-06A	0.6
3	2	SQUARE PIPE	ISO 12633-2	60x60x4-455	Aluminium 6082-T6	DS-06A	1.1
4	4	SQUARE PIPE	ISO 12633-2	60x60x4-1170	Aluminium 6082-T6	DS-06A	2.8
5	2	SQUARE PIPE	ISO 12633-2	60x60x4-1190	Aluminium 6082-T6	DS-06A	2.8
6	6	SQUARE PIPE	ISO 12633-2	60x60x4-1280	Aluminium 6082-T6	DS-06A	3
7	4	SQUARE PIPE	ISO 12633-2	80x80x8-1030	Aluminium 6082-T6	DS-06A	6.1
8	2	PIPE		Ø120x5	Aluminium 6082-T6	DS-06B	1.3
9	2	PIPE		Ø40x5	Aluminium 6082-T6	DS-06B	1.1
10	1	PIPE		Ø40x5	Aluminium 6082-T6	DS-06B	1.6
11	2	PIPE		Ø30x5	Aluminium 6082-T6	DS-06B	0.5
12	1	ROD		Ø60x130	Aluminium 6082-T6	DS-06B	0.4
13	1	ROD		Ø60x130	Aluminium 6082-T6	DS-06B	0.4
14	1	ROD		Ø38x45	Aluminium 6082-T6	DS-06B	0.1
15	4	PLATE		THK31	Aluminium 6082-T6	DS-06A	0.7
16	2	PLATE		THK15	Aluminium 6082-T6	DS-06B	0.6
17	1	PLATE		THK12,5	Aluminium 6082-T6	DS-06B	17.7
18	4	PLATE		THK10	Aluminium 6082-T6	DS-06B	0.4
19	2	PLATE		THK10	Aluminium 6082-T6	DS-06B	0.2
20	1	PLATE		THK10	Aluminium 6082-T6	DS-06B	0.6
21	1	PLATE		THK10	Aluminium 6082-T6	DS-06B	1.3
22	1	PLATE		THK8	Aluminium 6082-T6	DS-06B	0.1
23	2	PLATE		THK8	Aluminium 6082-T6	DS-06B	0.3
24	2	PLATE		THK8	Aluminium 6082-T6	DS-06B	0.3
25	4	PLATE		THK6	Aluminium 6082-T6	DS-06B	0.1
26	8	PLATE		THK6	Aluminium 6082-T6	DS-06B	0.1
27	3	PLATE		THK6	Aluminium 6082-T6	DS-06B	0
28	4	PLATE		THK6	Aluminium 6082-T6	DS-06B	0
29	12	PLATE		THK6	Aluminium 6082-T6	DS-06B	0.1
30	16	PLATE		THK 6	Aluminium 6082-T6	DS-06B	0.1
31	1	PLATE		THK6	Aluminium 6082-T6	DS-06B	0.7
32	2	PLATE		THK6	Aluminium 6082-T6	DS-06B	0.8
33	1	PLATE		THK6	Aluminium 6082-T6	DS-06B	0.4
34	1	PLATE		THK6	Aluminium 6082-T6	DS-06B	1
35	2	PLATE		THK6	Aluminium 6082-T6	DS-06B	0.1
36	1	PLATE		THK6	Aluminium 6082-T6	DS-06B	0.1
37	2	PLATE		THK6	Aluminium 6082-T6	DS-06B	0.3
38	4	PLATE		THK6	Aluminium 6082-T6	DS-06B	0.1
39	2	PLATE		THK6	Aluminium 6082-T6	DS-06B	0.4
40	8	PLATE		THK6	Aluminium 6082-T6	DS-06B	0.1
41	4	PLATE		THK6	Aluminium 6082-T6	DS-06B	0.2
42	2	PLATE		THK6	Aluminium 6082-T6	DS-06B	0.4
43	4	PLATE		THK6	Aluminium 6082-T6	DS-06B	0.1
44	2	PLATE		THK6	Aluminium 6082-T6	DS-06B	0.1
45	2	PLATE		THK6	Aluminium 6082-T6	DS-06B	0.1
46	2	PLATE		THK5	Aluminium 6082-T6	DS-06B	0.7

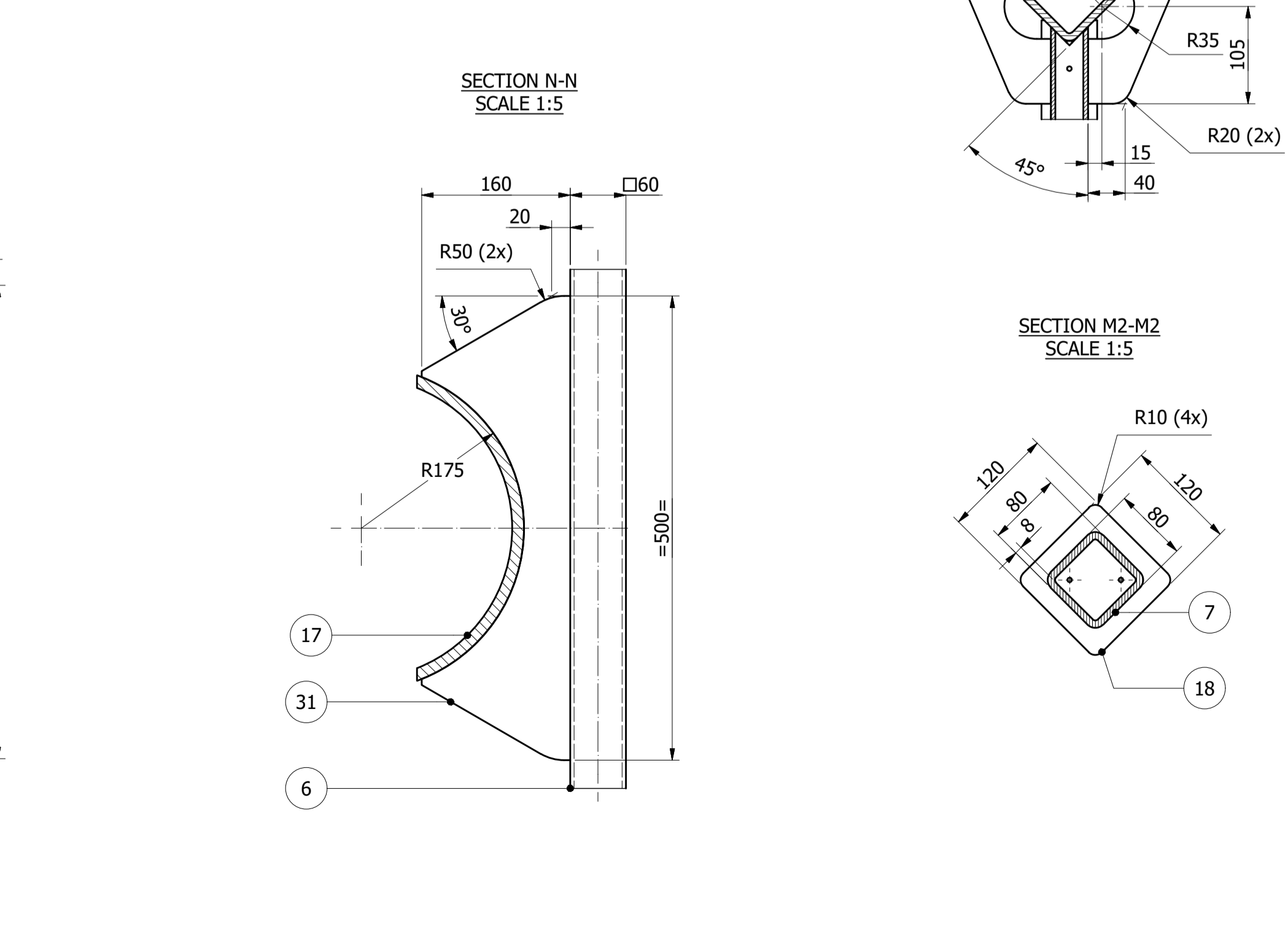
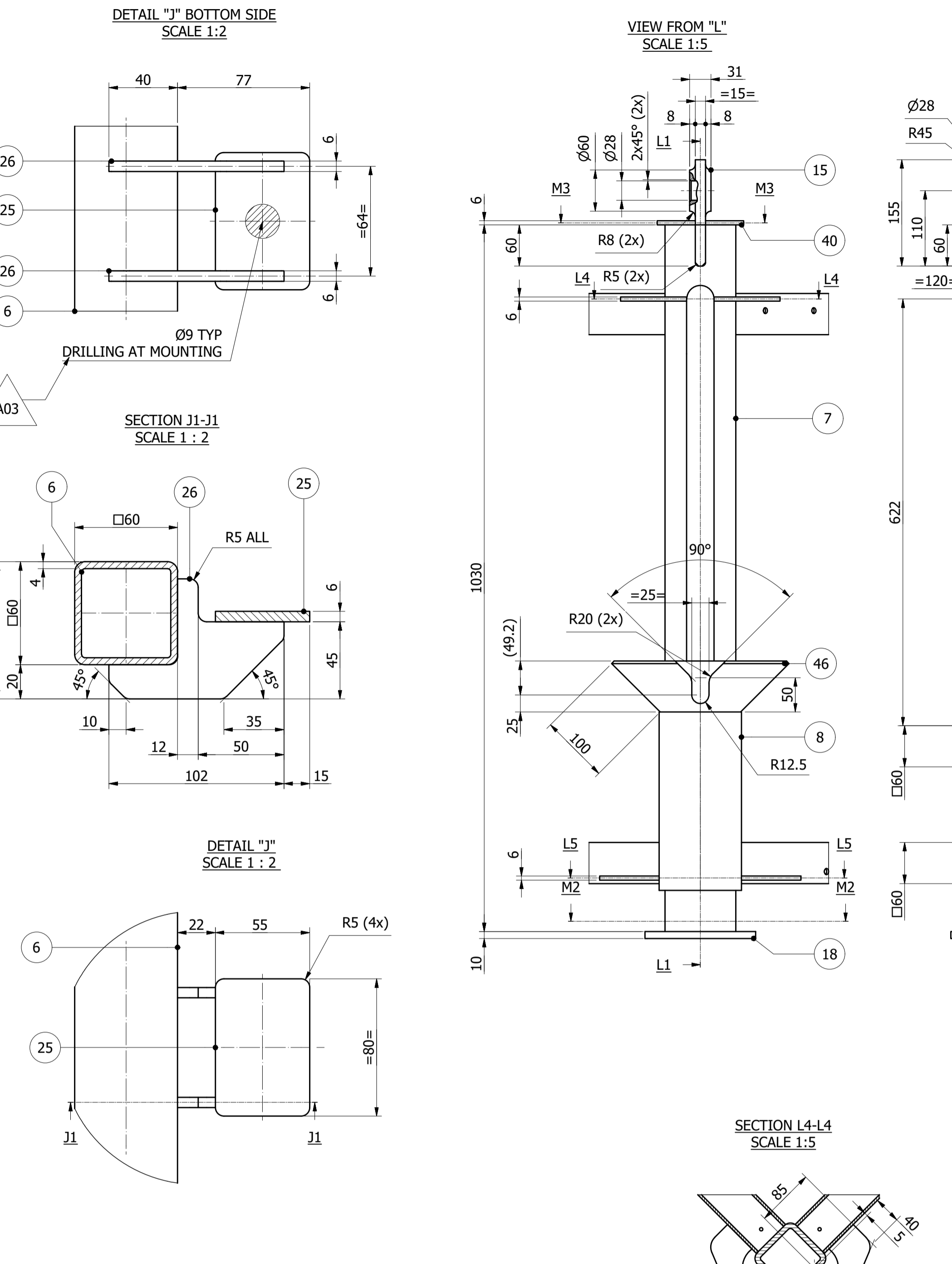
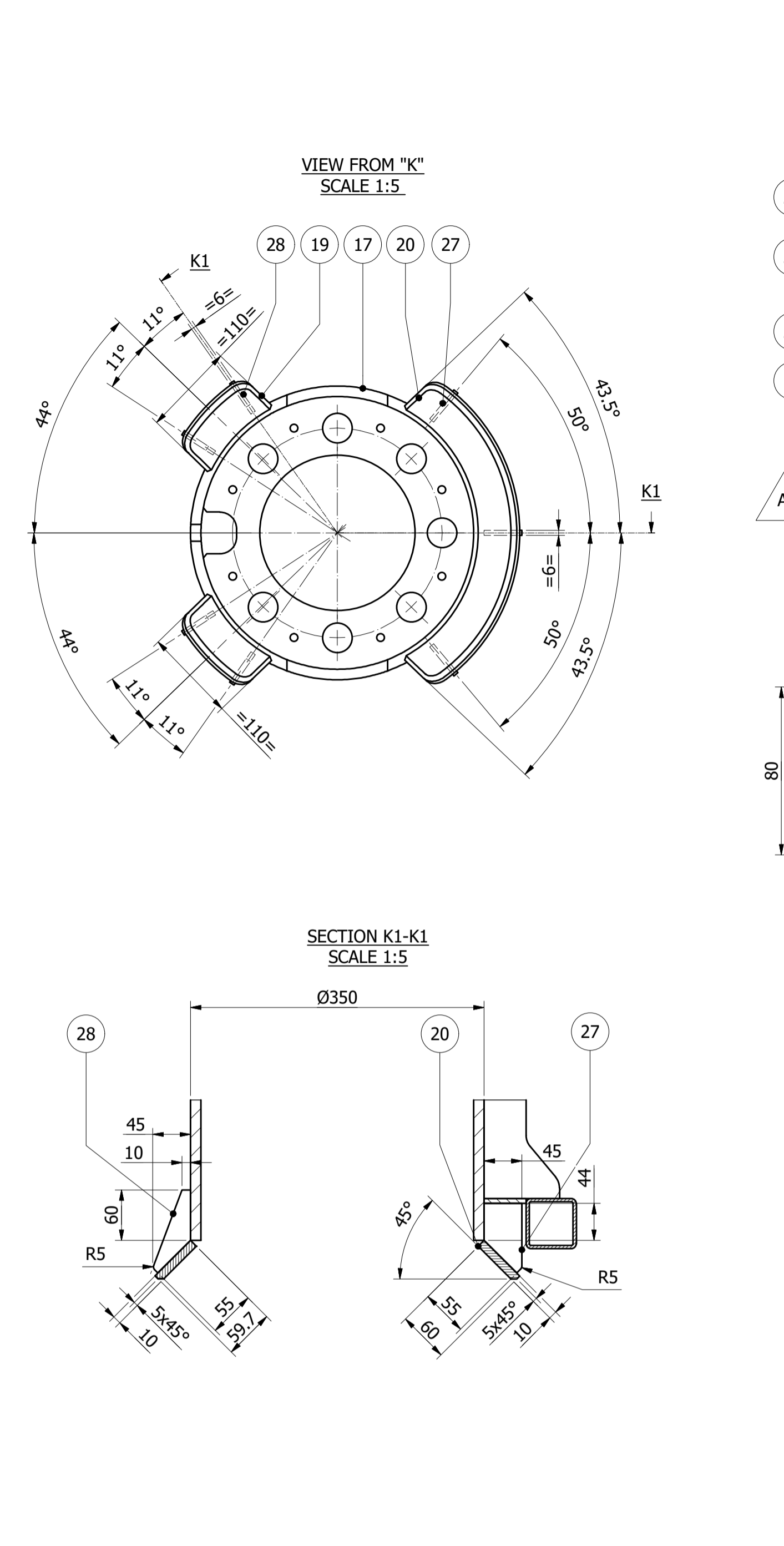
NOTES:
 1. (*) All dimensions are in millimeters (mm)
 2. (*) Unmachined surfaces shall be clean and natural
 3. (*) Remove all burrs and sharp edge
 4. (*) General tolerances must be in accordance with ISO 13920 - BF
 5. (*) All welds must be continuous full penetration
 6. (*) All fillet welds shall be continuous, and the size "S" shall be equals 0.7 times of the minimum thickness
 to be welded
 (*) Unless Otherwise Stated

NOTES TAG:
 TAG to be performed as per ref. doc. 133952-SA-3R00-RP-00003.
 In case of anodized/painted part coating shall not be removed

ANODIZING NOTE:
 1- ** Tolerance to be guaranteed after anodizing.
 ATTENTION!
 Part of anodizing penetrates inside the piece and part increases the thickness.
 2- Remove anodization for a diameter equal to the washer or to the countersink

Rev.	Date	Issue Description	Prepared by	Engineering Check	Technical Approval	Management Approval
A03	14/09/2021	ISSUE FOR CONSTRUCTION	DECA	SA/RT	AS	BG
A02	09/07/2021	ISSUE FOR CONSTRUCTION	DECA	SA/RT	AS	BG
A01	11/06/2021	ISSUE FOR BID	DECA	SA/RT	AS	BG

Project Name: HYDRONE
 Document Title: FRAME
 Drawing No.: 133952-SA-3R07-MD-00469
 Scale: 1:10
 Size: A1
 Sheet 2 of 4
 WBS: NNY1
 E-Code: 0711

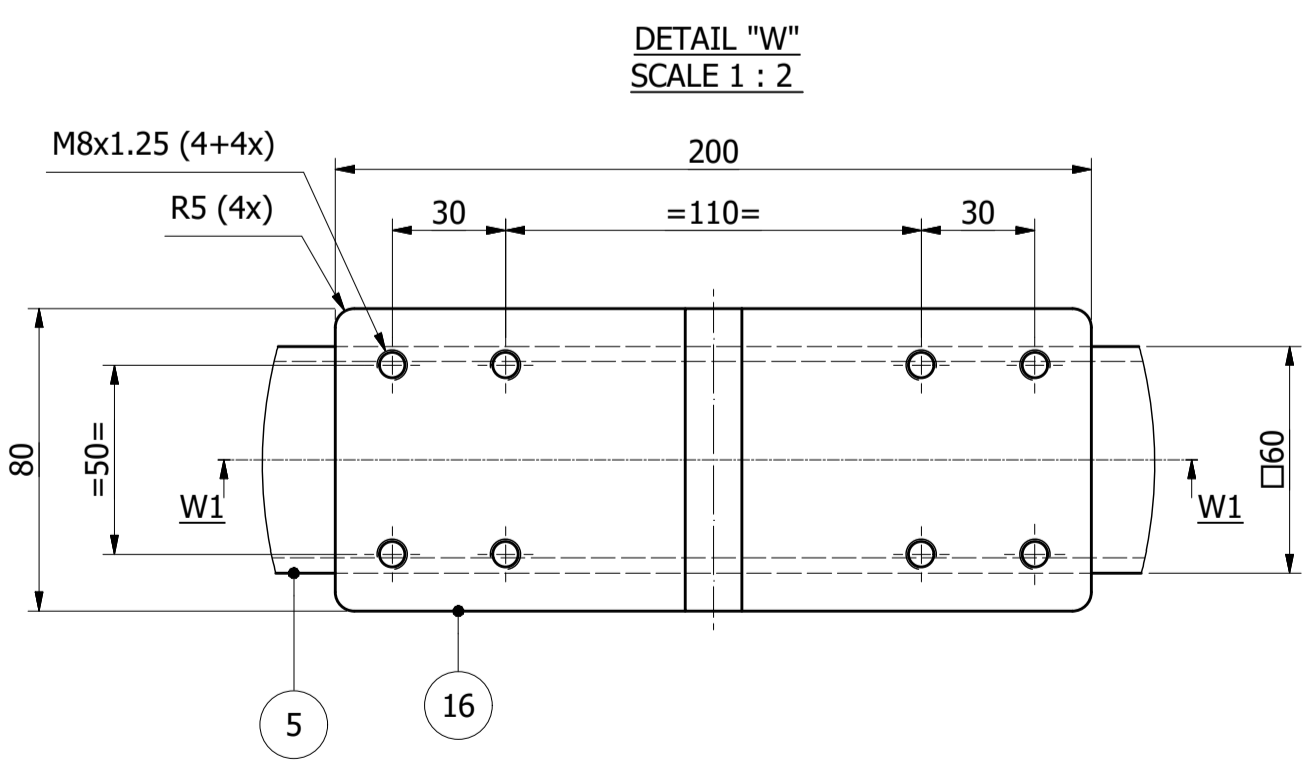
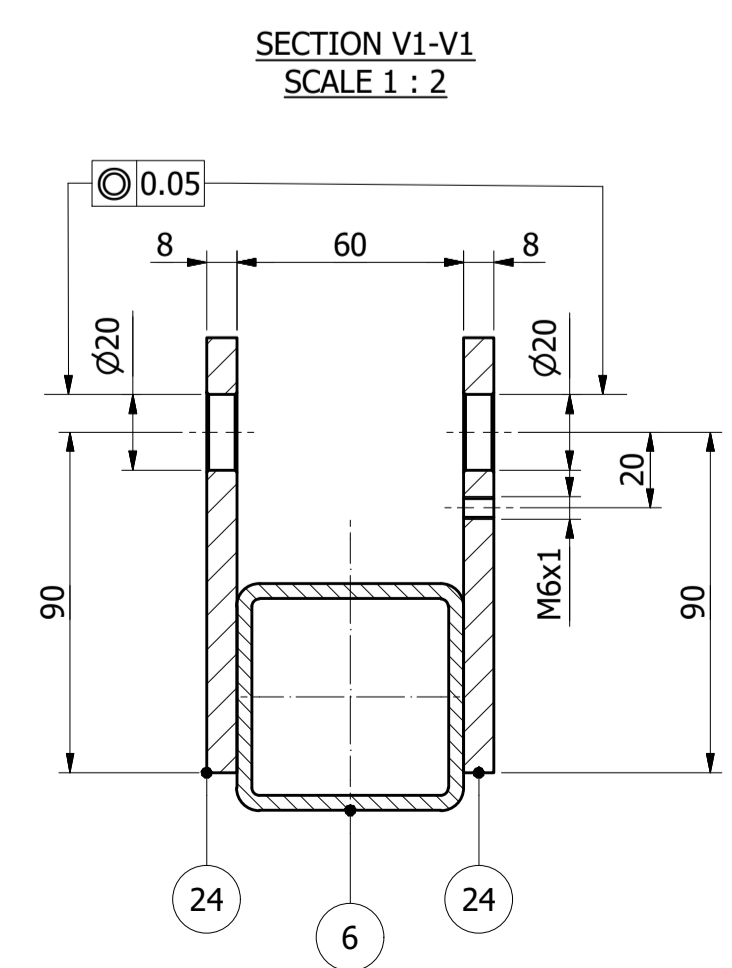
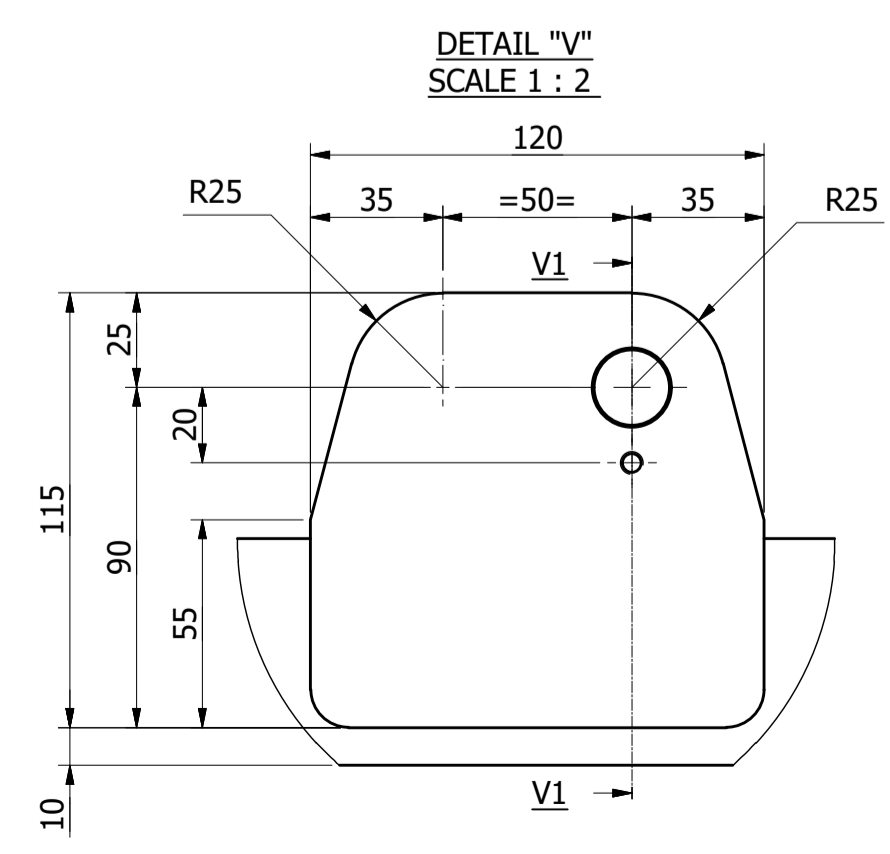
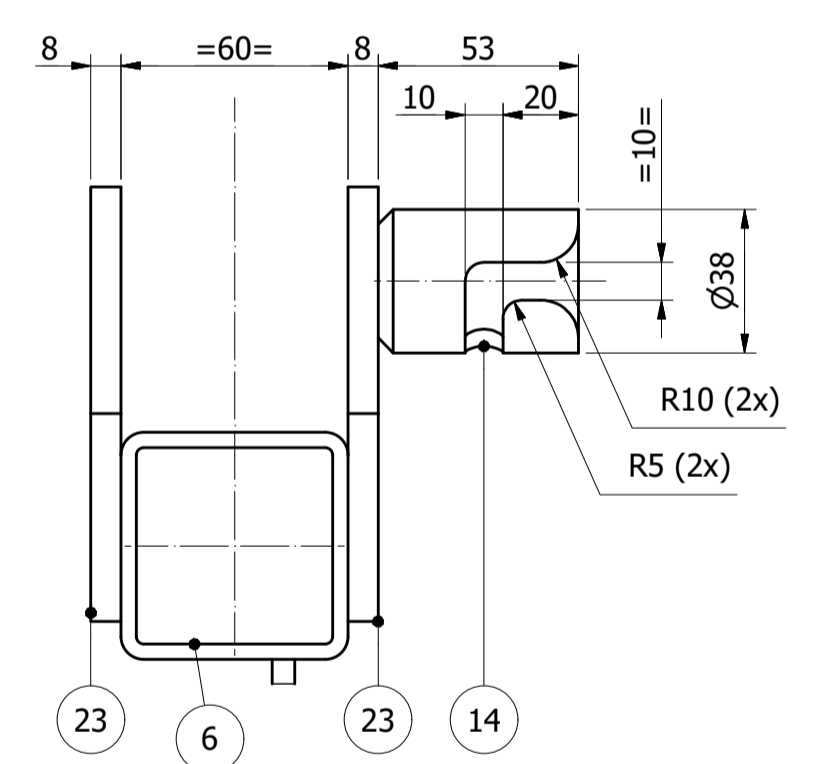
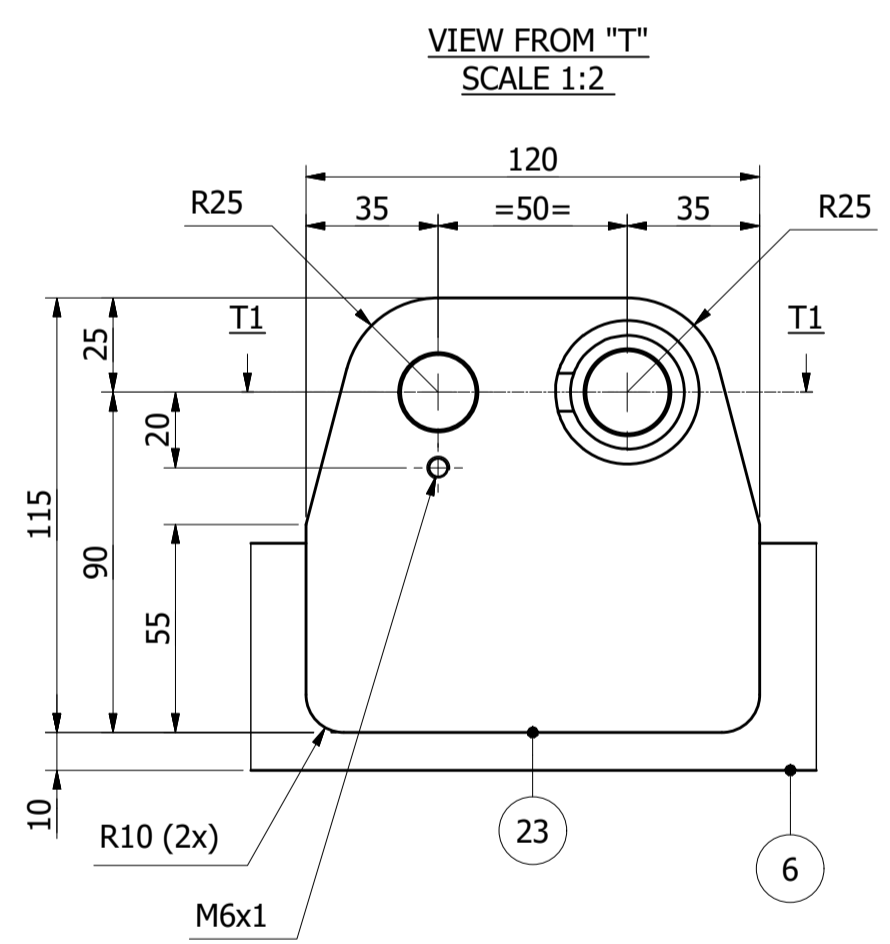
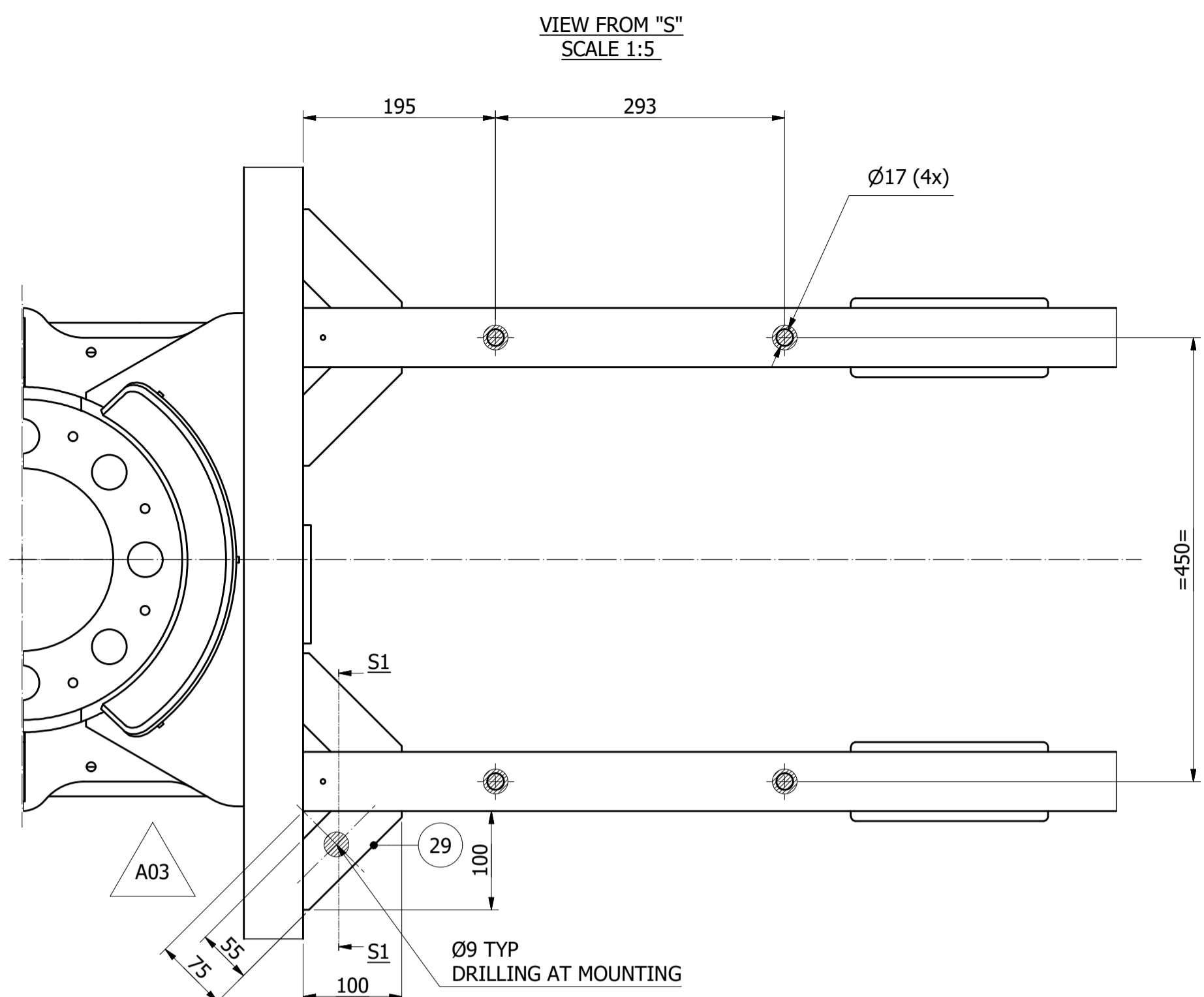
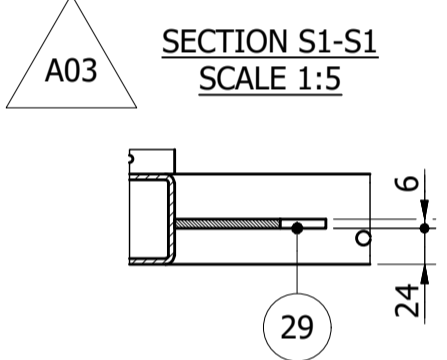
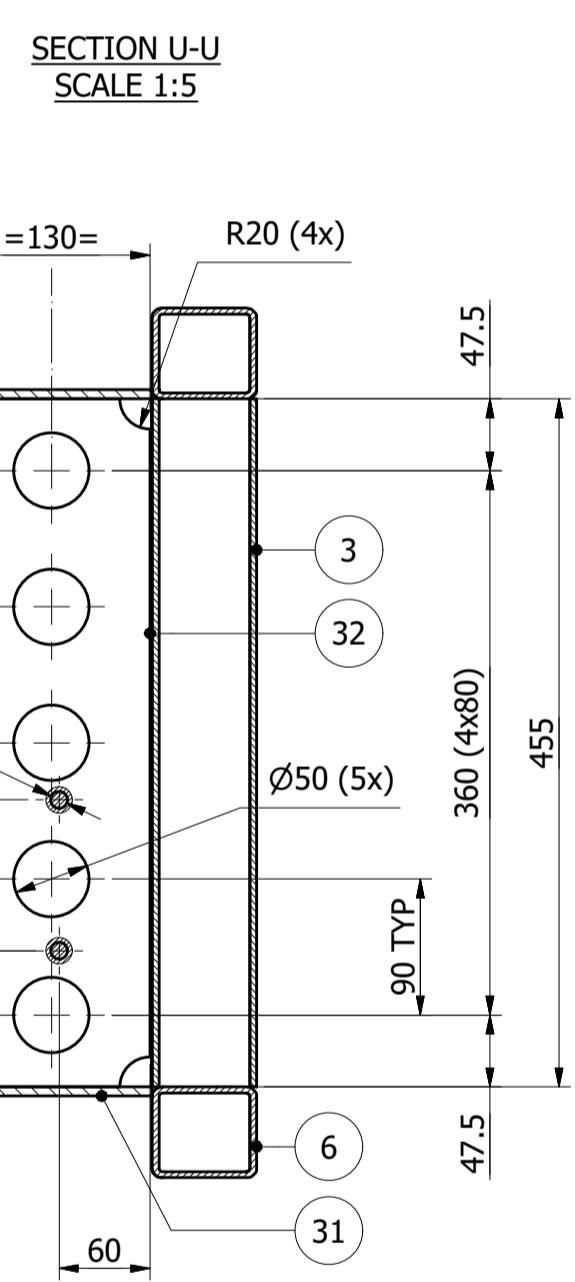
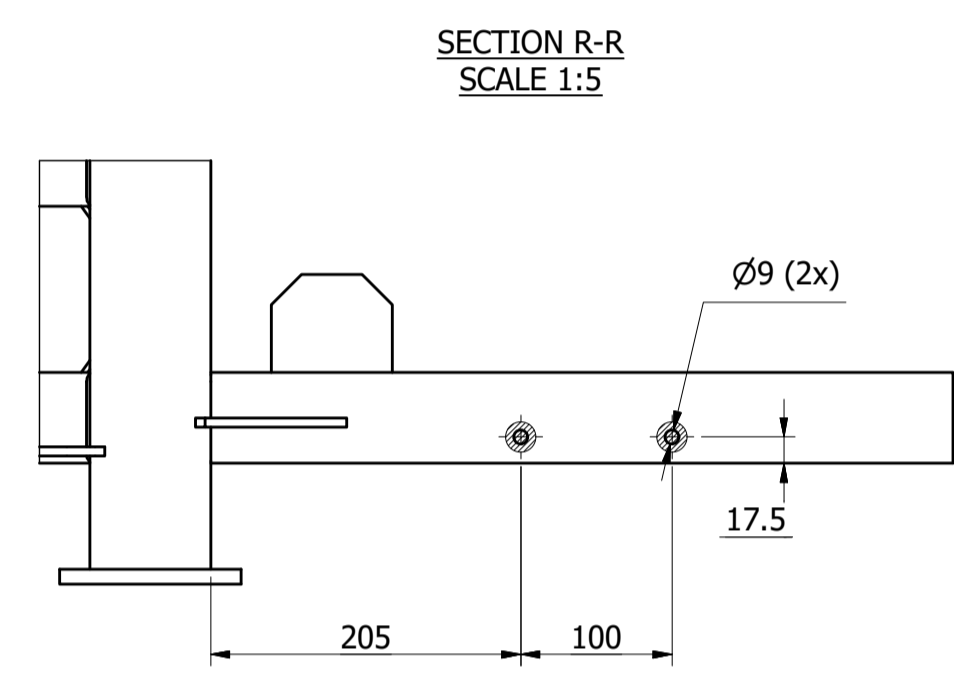
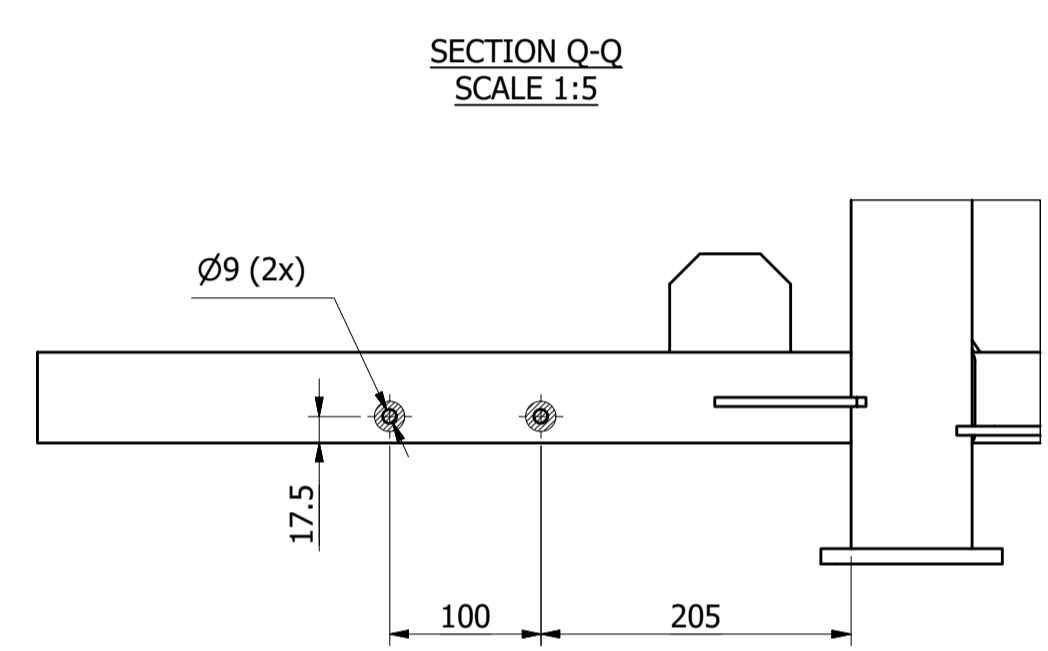
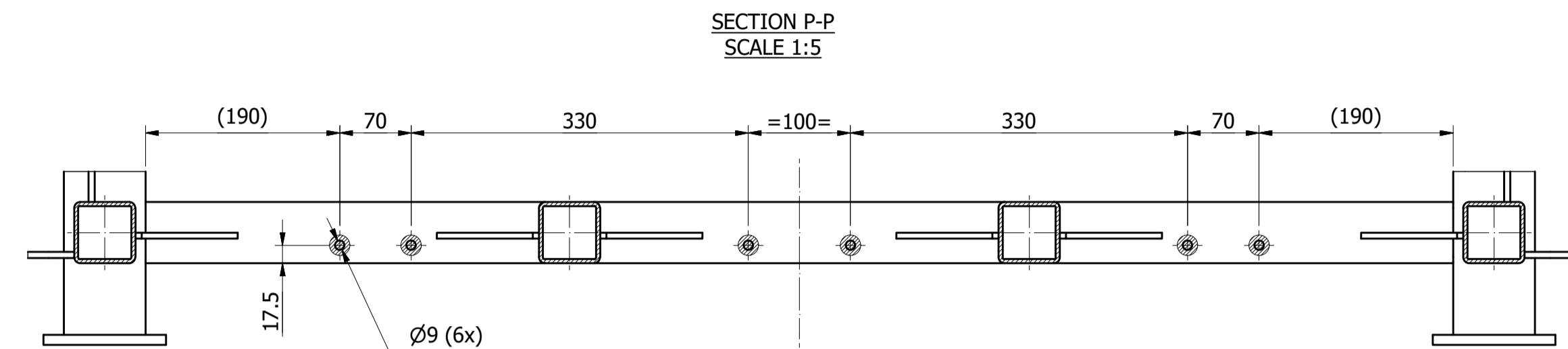
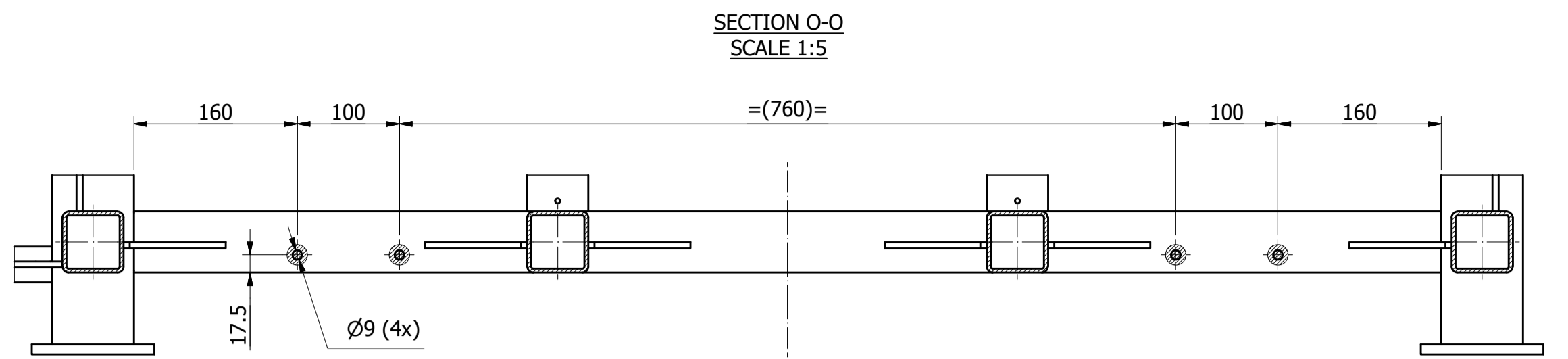


Item Description		FRAME	
Standard		Dimensions [mm]	
Material		SEE BOM	
Material Certification / Data Sheet		SEE BOM	
Material Specification		133952-SA-3R00-DB-00001	
Treatment / Treatment Spec.			
Surface Coating / Surface Coating Spec.			
Welding Spec.		133952-SA-3R00-DS-00001	
Weight In Air		112,8 kg	
Weight In Water		70,1 kg	

BOM CARPENTRY							
ITEM	QTY	DESCRIPTION	STANDARD	DIMENSIONS	MATERIAL	MAT. SPEC.	WEIGHT
1	2	SQUARE PIPE	ISO 12633-2	60x60x4-225	Aluminium 6082-T6	DS-06A	0.5
2	4	SQUARE PIPE	ISO 12633-2	60x60x4-290	Aluminium 6082-T6	DS-06A	0.6
3	2	SQUARE PIPE	ISO 12633-2	60x60x4-455	Aluminium 6082-T6	DS-06A	1.1
4	4	SQUARE PIPE	ISO 12633-2	60x60x4-1170	Aluminium 6082-T6	DS-06A	2.8
5	2	SQUARE PIPE	ISO 12633-2	60x60x4-1190	Aluminium 6082-T6	DS-06A	2.8
6	6	SQUARE PIPE	ISO 12633-2	60x60x4-1280	Aluminium 6082-T6	DS-06A	3
7	4	SQUARE PIPE	ISO 12633-2	80x80x8-1030	Aluminium 6082-T6	DS-06A	6.1
8	2	PIPE		Ø120x5	Aluminium 6082-T6	DS-06B	1.3
9	2	PIPE		Ø40x5	Aluminium 6082-T6	DS-06B	1.1
10	1	PIPE		Ø40x5	Aluminium 6082-T6	DS-06B	1.6
11	2	PIPE		Ø30x5	Aluminium 6082-T6	DS-06B	0.5
12	1	ROD		Ø60x130	Aluminium 6082-T6	DS-06B	0.4
13	1	ROD		Ø60x130	Aluminium 6082-T6	DS-06B	0.4
14	1	ROD		Ø38x45	Aluminium 6082-T6	DS-06B	0.1
15	4	PLATE		THK31	Aluminium 6082-T6	DS-06A	0.7
16	2	PLATE		THK15	Aluminium 6082-T6	DS-06B	0.6
17	1	PLATE		THK12,5	Aluminium 6082-T6	DS-06B	17.7
18	4	PLATE		THK10	Aluminium 6082-T6	DS-06B	0.4
19	2	PLATE		THK10	Aluminium 6082-T6	DS-06B	0.2
20	1	PLATE		THK10	Aluminium 6082-T6	DS-06B	0.6
21	1	PLATE		THK10	Aluminium 6082-T6	DS-06B	1.3
22	1	PLATE		THK8	Aluminium 6082-T6	DS-06B	0.1
23	2	PLATE		THK8	Aluminium 6082-T6	DS-06B	0.3
24	2	PLATE		THK8	Aluminium 6082-T6	DS-06B	0.3
25	4	PLATE		THK6	Aluminium 6082-T6	DS-06B	0.1
26	8	PLATE		THK6	Aluminium 6082-T6	DS-06B	0.1
27	3	PLATE		THK6	Aluminium 6082-T6	DS-06B	0
28	4	PLATE		THK6	Aluminium 6082-T6	DS-06B	0
29	12	PLATE		THK6	Aluminium 6082-T6	DS-06B	0.1
30	16	PLATE		THK 6	Aluminium 6082-T6	DS-06B	0.1
31	1	PLATE		THK6	Aluminium 6082-T6	DS-06B	0.7
32	2	PLATE		THK6	Aluminium 6082-T6	DS-06B	0.8
33	1	PLATE		THK6	Aluminium 6082-T6	DS-06B	0.4
34	1	PLATE		THK6	Aluminium 6082-T6	DS-06B	1
35	2	PLATE		THK6	Aluminium 6082-T6	DS-06B	0.1
36	1	PLATE		THK6	Aluminium 6082-T6	DS-06B	0.1
37	2	PLATE		THK6	Aluminium 6082-T6	DS-06B	0.3
38	4	PLATE		THK6	Aluminium 6082-T6	DS-06B	0.1
39	2	PLATE		THK6	Aluminium 6082-T6	DS-06B	0.4
40	8	PLATE		THK6	Aluminium 6082-T6	DS-06B	0.1
41	4	PLATE		THK6	Aluminium 6082-T6	DS-06B	0.2
42	2	PLATE		THK6	Aluminium 6082-T6	DS-06B	0.4
43	4	PLATE		THK6	Aluminium 6082-T6	DS-06B	0.1
44	2	PLATE		THK6	Aluminium 6082-T6	DS-06B	0.1
45	2	PLATE		THK6	Aluminium 6082-T6	DS-06B	0.1
46	2	PLATE		THK5	Aluminium 6082-T6	DS-06B	0.7

- NOTES:**
- (*) All dimensions are in millimeters (mm)
 - (*) Unmachined surfaces shall be clean and natural
 - (*) Remove all burrs and sharp edge
 - (*) General tolerances must be in accordance with ISO 13920 - BF
 - (*) All welds must be continuous full penetration
 - (*) All fillet welds shall be continuous, and the size "S" shall be equal 0.7 times of the minimum thickness to be welded
- (*) Unless Otherwise Stated
- NOTES TAG:**
- TAG to be performed as per ref. doc. 133952-SA-3R00-PP-00003.
In case of anodized/painted part coating shall not be removed
- ANODIZING NOTE:**
- ** Tolerance to be guaranteed after anodizing.
ATTENTION!
Part of anodizing penetrates inside the piece and part increases the thickness.
 - Remove anodization for a diameter equal to the washer or to the countersink

A03	x 2		Rev.	Issue Description			Prepared by	Engineering Check	Technical Approval	Management Approval	
	Project Name										
	Document Title										
	FRAME										
Project Name							HYDRONE				
Drawing No.							133952-SA-3R07-MD-00469				
Scale:							1:10				
Size:							A1				
Sheet							3 of 4				
WBS:							NNY1				
E-Code:							0711				
File Name: 133952-SA-3R07-MD-00469-A03.idw											



TOLERANCE ISO 2768-1 m (linear dimensions)		Item Description	
mm	mm	Standard	1135x2137x2143
from 0 to 0.25	±0.15	Material	SEE BOM
from 0.25 to 1.2	±0.1	Material Certification / Data Sheet	SEE BOM
from 1.2 to 3	±0.1	Material Specification	133952-SA-3R00-DB-00001
from 3 to 10	±0.15	Treatment / Treatment Spec.	
from 10 to 30	±0.2	Surface Coating / Surface Coating Spec.	
from 30 to 100	±0.25	Welding Spec.	133952-SA-3R00-DS-00001
from 100 to 300	±0.3	Weight In Air	112,8 kg
from 300 to 1000	±0.4	Weight In Water	70,1 kg

BOM CARPENTRY							
ITEM	QTY	DESCRIPTION	STANDARD	DIMENSIONS	MATERIAL	MAT. SPEC.	WEIGHT
1	2	SQUARE PIPE	ISO 12633-2	60x60x4-225	Aluminium 6082-T6	DS-06A	0.5
2	4	SQUARE PIPE	ISO 12633-2	60x60x4-290	Aluminium 6082-T6	DS-06A	0.6
3	2	SQUARE PIPE	ISO 12633-2	60x60x4-455	Aluminium 6082-T6	DS-06A	1.1
4	4	SQUARE PIPE	ISO 12633-2	60x60x4-1170	Aluminium 6082-T6	DS-06A	2.8
5	2	SQUARE PIPE	ISO 12633-2	60x60x4-1190	Aluminium 6082-T6	DS-06A	3
6	2	SQUARE PIPE	ISO 12633-2	60x60x4-1280	Aluminium 6082-T6	DS-06A	3
7	4	SQUARE PIPE	ISO 12633-2	80x80x8-1030	Aluminium 6082-T6	DS-06A	6.1
8	2	PIPE		Ø130x5	Aluminium 6082-T6	DS-06B	1.3
9	2	PIPE		Ø40x5	Aluminium 6082-T6	DS-06B	1.1
10	1	PIPE		Ø40x5	Aluminium 6082-T6	DS-06B	1.6
11	2	PIPE		Ø30x5	Aluminium 6082-T6	DS-06B	0.5
12	1	ROD		Ø60x130	Aluminium 6082-T6	DS-06B	0.4
13	1	ROD		Ø60x130	Aluminium 6082-T6	DS-06B	0.4
14	1	ROD		Ø38x45	Aluminium 6082-T6	DS-06B	0.1
15	4	PLATE		THK31	Aluminium 6082-T6	DS-06A	0.7
16	2	PLATE		THK15	Aluminium 6082-T6	DS-06B	0.6
17	1	PLATE		THK12.5	Aluminium 6082-T6	DS-06B	17.7
18	4	PLATE		THK10	Aluminium 6082-T6	DS-06B	0.4
19	2	PLATE		THK10	Aluminium 6082-T6	DS-06B	0.2
20	1	PLATE		THK10	Aluminium 6082-T6	DS-06B	0.6
21	1	PLATE		THK10	Aluminium 6082-T6	DS-06B	1.3
22	1	PLATE		THK8	Aluminium 6082-T6	DS-06B	0.1
23	2	PLATE		THK8	Aluminium 6082-T6	DS-06B	0.3
24	2	PLATE		THK8	Aluminium 6082-T6	DS-06B	0.3
25	4	PLATE		THK6	Aluminium 6082-T6	DS-06B	0.1
26	8	PLATE		THK6	Aluminium 6082-T6	DS-06B	0.1
27	3	PLATE		THK6	Aluminium 6082-T6	DS-06B	0
28	4	PLATE		THK6	Aluminium 6082-T6	DS-06B	0
29	12	PLATE		THK6	Aluminium 6082-T6	DS-06B	0.1
30	16	PLATE		THK 6	Aluminium 6082-T6	DS-06B	0.1
31	1	PLATE		THK6	Aluminium 6082-T6	DS-06B	0.7
32	2	PLATE		THK6	Aluminium 6082-T6	DS-06B	0.8
33	1	PLATE		THK6	Aluminium 6082-T6	DS-06B	0.4
34	1	PLATE		THK6	Aluminium 6082-T6	DS-06B	1
35	2	PLATE		THK6	Aluminium 6082-T6	DS-06B	0.1
36	1	PLATE		THK6	Aluminium 6082-T6	DS-06B	0.1
37	2	PLATE		THK6	Aluminium 6082-T6	DS-06B	0.3
38	4	PLATE		THK6	Aluminium 6082-T6	DS-06B	0.1
39	2	PLATE		THK6	Aluminium 6082-T6	DS-06B	0.4
40	8	PLATE		THK6	Aluminium 6082-T6	DS-06B	0.1
41	4	PLATE		THK6	Aluminium 6082-T6	DS-06B	0.2
42	2	PLATE		THK6	Aluminium 6082-T6	DS-06B	0.4
43	4	PLATE		THK6	Aluminium 6082-T6	DS-06B	0.1
44	2	PLATE		THK6	Aluminium 6082-T6	DS-06B	0.1
45	2	PLATE		THK6	Aluminium 6082-T6	DS-06B	0.1
46	2	PLATE		THK5	Aluminium 6082-T6	DS-06B	0.7

NOTES:

- (*) All dimensions are in millimeters (mm)
- (*) Unmachined surfaces shall be clean and natural
- (*) Remove all burrs and sharp edge
- (*) General tolerances must be in accordance with ISO 13920 - BF
- (*) All welds must be continuous full penetration
- (*) All fillet welds shall be continuous, and the size "S" shall be equals 0.7 times of the minimum thickness to be welded

(*) Unless Otherwise Stated

NOTES TAG:
TAG to be performed as per ref. doc. 133952-SA-3R00-RP-00003.
In case of anodized/painted part coating shall not be removed

ANODIZING NOTE:

- ** Tolerance to be guaranteed after anodizing.
ATTENTION!
Part of anodizing penetrates inside the piece and part increases the thickness.
- Remove anodizing for a diameter equal to the washer or to the countersink

Project Name: HYDRONE

Document Title: FRAME

Scale: 1:10
Size: A1

Sheet 4 of 4

WBS: NNY1
E-Code: 0711

File Name: 133952-SA-3R07-MD-00469-A03.idw

Rev.	Date	Issue Description	Prepared by	Engineering Check	Technical Approval	Management Approval
A03	14/09/2021	ISSUE FOR CONSTRUCTION	DECA	SA/RT	AS	BG
A02	09/07/2021	ISSUE FOR CONSTRUCTION	DECA	SA/RT	AS	BG
A01	11/06/2021	ISSUE FOR BID	DECA	SA/RT	AS	BG